

TASMANIAN STATISTICAL INDICATORS

EMBARGO: 11:30AM (CANBERRA TIME) MON 10 SEPT 2001

CONTENTS

	page
Notes	2
Main features	3
List of tables.	8

SUBJECT AREAS

1 Population and demography	9
2 Labour force	10
3 Wages and prices	18
4 Production	24
5 Primary industry	25
6 Building	29
7 Finance	30
8 Tourism	32
9 Transport	34
10 Retail trade.	35
11 Overseas trade	36
12 Australia and State comparisons.	38
13 Tasmanian Statistical Divisions comparisons	40

ADDITIONAL INFORMATION

Map: Tasmanian Statistical Divisions.	42
---	----

- For further information about these and related statistics, contact the National Information and Referral Service on 1300 135 070 or Mary Eagle on Hobart (03) 6222 5812.

NOTES

FORTHCOMING ISSUES

<i>ISSUE</i>	<i>RELEASE DATE</i>
October 2001	8 October 2001
November 2001	8 November 2001
December 2001	10 December 2001
January 2002	11 January 2002
February 2002	8 February 2002
March 2002	3 March 2002

INTRODUCTION

1 This publication contains latest figures for a comprehensive range of economic indicators. Statistics shown in this publication are the latest available at the date of preparation and may be subject to revision in subsequent issues. Reference should therefore always be made to the latest issue or to the statistical publication on the specific subject.

SEASONAL ADJUSTMENT AND TREND ESTIMATION

2 Seasonal adjustment is a means of removing the estimated effects of normal seasonal variation from the series so that the effects of other influences on the series can be more clearly recognised. Seasonal adjustment does not aim to remove the irregular or non-seasonal influences which may be present in any particular month. This means that month-to-month movements of the seasonally adjusted estimates may not be reliable indicators of trend behaviour.

3 The smoothing of seasonally adjusted series reduces the impact of the irregular components of the seasonally adjusted series and creates trend estimates. These trend estimates are derived by applying a 13-term Henderson-weighted moving average to all months except the last six. The last six monthly trend estimates are obtained by applying surrogates of the Henderson average to the seasonally adjusted series.

4 While this smoothing technique enables estimates to be produced for the latest month, it does result in revisions to the most recent months as additional observations become available. Generally, subsequent revisions become smaller and after three months have a negligible impact on the series.

5 ABS statistical series are being impacted by varying degrees as a result of The New Tax System (TNTS), introduced in Australia from 1 July 2000. TNTS includes the removal of Wholesale Sales Tax and the introduction of a Goods and Service Tax (GST), and as a result, a number of ABS data series will reflect significant and subsequent impacts. Further information can be found in *ABS Statistics and The New Tax System* (Cat. no. 1358.0).

SYMBOLS AND OTHER USAGES

n.a.	not available
n.p.	not available for separate publication (but included in totals where applicable)
n.y.a.	not yet available
. .	not applicable
—	nil or rounded to zero
p	preliminary — figure or series subject to revision
r	figure or series revised since previous issue

Stevan R. Matheson
Regional Director, Tasmania

MAIN FEATURES

THE LABOUR FORCE

Trend estimates There were an estimated 216,500 persons (based on trend estimates) in the labour force in July 2001 and an estimated 372,500 civilian Tasmanians aged 15 years or more, yielding a labour force participation rate of 58.1%, compared to 59.2% in July 2000. The Australian labour force participation rate for July 2001 was 63.8%, the same as for July 2000 (see table 39 and *Labour Force, Australia, Preliminary* (Cat. no. 6202.0)).

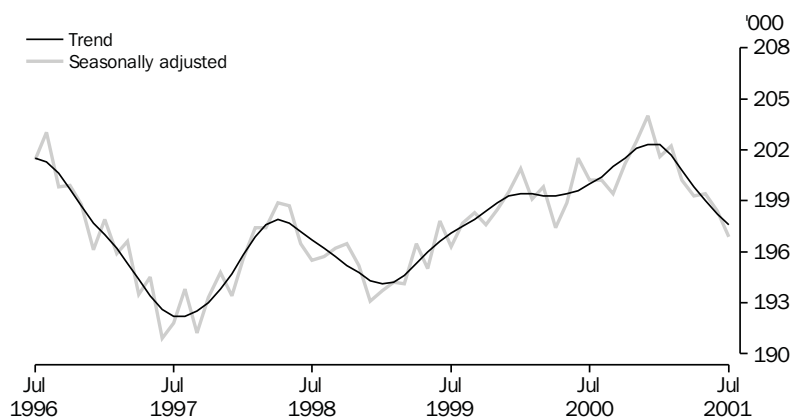
For Tasmanian males, the *trend* estimate of the participation rate was 66.8% in July 2001, compared to 67.9% in July 2000. For Tasmanian females, the *trend* estimate of the participation rate was 49.9% in July 2001, compared to 50.9% in July 2000 (see table 3).

EMPLOYMENT

State comparisons

Trend estimates There was an decrease of 1.2% in Tasmania's employment over the 12 months to July 2001. Employment over the period increased in Victoria by 1.2%; Western Australia, 0.6%; Queensland, 0.3%; New South Wales, 0.1%; and decreased in South Australia by 1.0%. The increase in Australia's employment over the same period was 0.4% (see table 39 and *Labour Force, Australia, Preliminary* (Cat. no. 6202.0)).

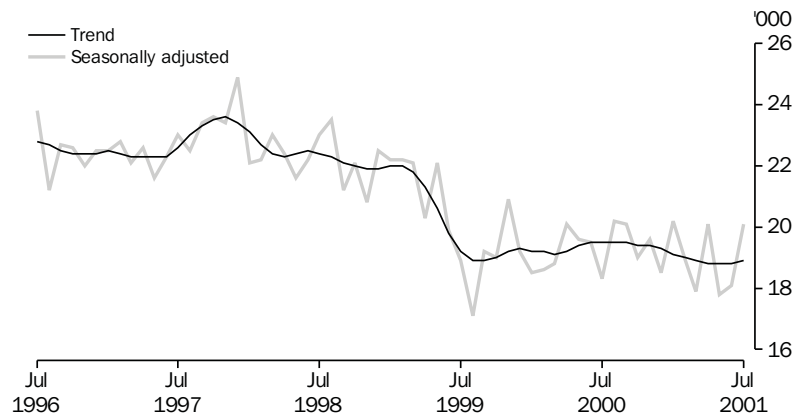
EMPLOYMENT, TASMANIA



UNEMPLOYMENT

Trend estimates The *trend* estimate of the number of unemployed persons in Tasmania for July 2001 was 18,900, compared to 19,500 in July 2000. The *trend* estimate of the unemployment rate of 8.7% in July 2001 compares to 8.9% in July 2000. The Australian *trend* estimate of the unemployment rate was 6.9% in July 2001, compared to 6.2% in July 2000 (see table 3 and 39, and *Labour Force, Australia, Preliminary* (Cat. no. 6202.0)).

UNEMPLOYMENT, TASMANIA

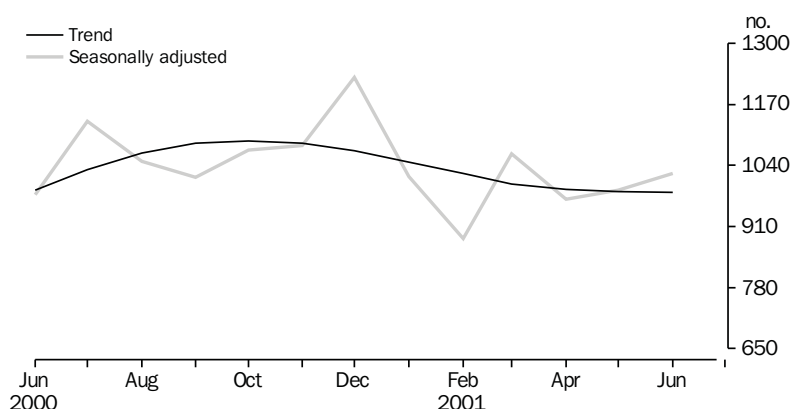


HOUSING FINANCE

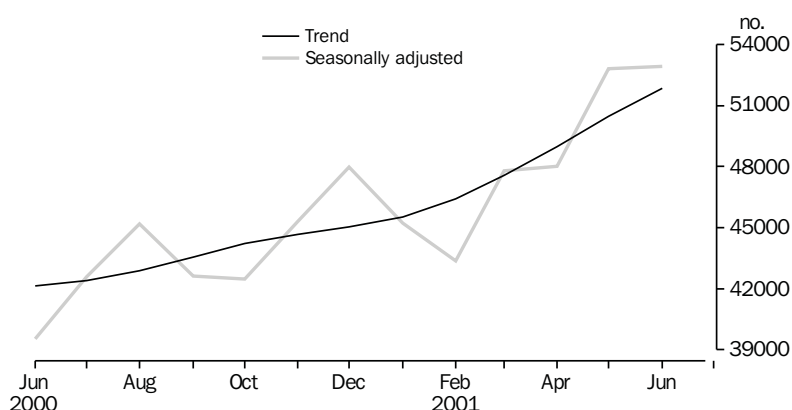
Trend estimates

The latest *trend* series for the number of housing finance commitments in Tasmania shows a decrease of 0.3% between May 2001 and June 2001. The *trend* series shows an overall decrease of 0.5% between June 2000 and June 2001. The national *trend* series shows an increase of 23.1% for the year June 2000 to June 2001, with an increase of 2.7% between May 2001 and June 2001.

HOUSING FINANCE, TASMANIA, Number of dwellings



HOUSING FINANCE, AUSTRALIA, Number of dwellings



The latest *trend* series for the total value of commitments for Tasmania has increased by 3.8% between May 2001 and June 2001, continuing the upward *trend* from the previous month. The *trend* series for the year between June 2000 to June 2001 shows an increase of 9.2%. The national trend series shows the value of commitments having increased by 3.7% between May 2001 and June 2001. An increase of 34.8% is shown for the 12 months from June 2000 to June 2001 (see table 28 and *Housing Finance for Owner Occupation, Australia (Cat. no. 5609.0)*).

BUILDING APPROVALS

Original terms There were 127 dwelling units approved during June 2001, including 119 new houses. The number of dwelling units approved during June 2001 was 5.2% below the May 2001 figure of 134, and 39.6% above the June 2000 figure of 91. The number of dwelling units approved in the 12 months to June 2001 (1,196) fell 36.8% from those approved in the 12 months to June 2000 (1,893).

At current prices, the value of total building was \$24.5m in July 2001, 46.3% below the May 2001 figure of \$45.6m and 21.5% below the July 2000 figure of \$31.2m. Residential building contributed \$17.7m and non-residential building \$6.8m in July 2001 (see table 27 and *Building Approvals, Australia* (Cat. no. 8731.0)).

NEW MOTOR VEHICLE REGISTRATIONS

Original terms There were 1,108 new motor vehicles (excluding motorcycles) registered in Tasmania during June 2001. This was 5.6% below the 1,174 registered in May 2001 and 4.6% above the June 2000 figure of 1,059. Of the new motor vehicles (excluding motorcycles) registered in June 2001, 813 were passenger vehicles, compared with 886 in May 2001 and 665 in June 2000 (see table 34).

RETAIL

Trend estimates In *trend* terms, the estimate of retail turnover in Australia for June 2001 was \$13,511.2m, 10.1% above the figure recorded in June 2000 (\$12,273.3m). In *trend* terms, the estimate of retail turnover in Tasmania for June 2001 was \$295.6m, 9.9% above the figure recorded in June 2000 (\$268.9m) (see table 35 and *Retail Trade, Australia* (Cat. no. 8501.0)).

LIVESTOCK SLAUGHTERING

Trend Monthly movements of *trend* estimates again showed decreases in both the cattle and calves and sheep and lambs slaughtering series, with cattle and calves down by 4.9% and sheep and lambs down by 1.5%. In June the estimate for the number of pigs slaughtered also decreased by 1.7%.

In June 2001, the *trend* estimate for the number of cattle and calves slaughtered was 17,700. This was down by 13.0% on the estimated number for June 2000, and down by 25.5% on the number for June 1999.

The *trend* estimate for the number of sheep and lambs slaughtered in June 2001 was 58,800. This was down by 32.4% on the estimate for June 2000, and down by 26.7% on the estimate for June 1999.

The trend estimate of 4,850 pigs slaughtered in June 2001 was 6.0% less than for June 2000 and 28.8% less than the trend estimate for June 1999 (see table 21).

CONSUMER PRICE INDEX

The Consumer Price Index (All groups) for Hobart increased by 1.0% in the June quarter of 2001. For the weighted average of eight capital cities, the index rose 0.8% for the June quarter.

All capital cities recorded a rise in the index for the June quarter 2001. Perth recorded the highest increase, at 1.4% while Melbourne recorded the lowest increase, at 0.6%.

OVERSEAS TRADE

The total value of Tasmania's exports for the 2000–2001 financial year was \$2,434m. This contributed 2.0% to the Australian total of \$119,602m.

The value of Tasmania's exports for the month of June 2001 was \$203m, a decrease of 8.8% over the month of May. Australia's exports for June 2001 totalled \$10,672m, a slight decrease on the previous month.

Tasmania's major export destinations for the month of June 2001 were Japan (\$77.1m), United States of America (\$22.0m) and Korea (\$17.9m). Major commodity groups exported for the month were non-ferrous metals (\$55.6m), metallic ores and metal scrap (\$32.9m) and medical and pharmaceutical products (\$10.6m).

For the financial year 2000–2001, major commodity groups exported were non-ferrous metals (\$793.3m), metallic ores and metal scrap (\$243.5m) and Fish, crustaceans and molluscs (\$176.7m).

LIST OF TABLES

1	Population	9
2	Births, deaths and marriages	9
3	Labour force status — Seasonally adjusted and trend	10
4	Labour force status by region, males	11
5	Labour force status by region, females	12
6	Labour force status by region, persons	13
7	Teenage labour market	14
8	All employed persons by occupation	15
9	Wage and salary earners, sector and industry	16
10	Average hours worked	16
11	Job vacancies	17
12	Industrial disputes	17
13	Average weekly earnings of employees — Original and trend	18
14	Indexes of total hourly rates of pay (excluding bonuses)	19
15	Summary of annual movements in wages and prices	20
16	House price index numbers	20
17	Consumer price index, Hobart and eight capital cities combined	21
18	Price index of materials used in building other than house building, Hobart	22
19	Production of selected commodities	24
20	Livestock slaughtering — Original	25
21	Livestock slaughtering — Seasonally adjusted and trend	25
22	Meat production	26
23	Principal mineral concentrates produced	26
24	Sawmills and plywood mills, logs delivered and timber produced	27
25	Chipping and grinding of wood	28
26	Logs delivered for milling or chipping	28
27	Building approvals — Original	29
28	Secured housing commitments — Original, seasonally adjusted and trend	30
29	Private new capital expenditure by type of asset — Original	30
30	Banking statistics	31
31	Accommodation establishments	32
32	National Parks, person entries	33
33	Tracks in National Parks, walker registrations	33
34	Registrations of new motor vehicles	34
35	Turnover of retail establishments at current prices — Original and trend	35
36	Value of overseas trade — Tasmania and Australia	36
37	Merchandise exports by country — Original	36
38	Merchandise exports by commodity — Original	37
39	Major Statistical Indicators — Australia and State comparisons	38
40	Major Statistical Indicators — Tasmanian Statistical Divisions	40

1

POPULATION

	<i>Estimated resident population</i>	<i>Natural increase(a)</i>	<i>Net estimated migration gain</i>	<i>Total population growth</i>	<i>Annual growth rate(b)</i>
	'000	'000	'000	'000	%
1997-98	471.7	2.1	-3.9	-1.8	-0.38
1998-99	470.8	2.7	-3.6	-0.9	-0.19
1999-2000	470.4	2.2	-2.6	-0.4	-0.09
1998					
December qtr	471.6	0.7	-0.7	-0.1	-0.23
1999					
March qtr	471.1	0.7	-1.2	-0.5	-0.26
June qtr	470.8	0.7	-1.0	-0.3	-0.19
September qtr p	470.8	0.5	-0.5	0	-0.17
December qtr p	470.7	0.5	-0.5	-0.1	-0.17
2000					
March qtr p	470.6	0.6	-0.8	-0.1	-0.09
June qtr p	470.4	0.5	-0.8	-0.3	-0.09
September qtr p	470.2	0.5	-0.7	-0.2	-0.14
December qtr p	470.1	0.4	-0.4	0	-0.13

(a) Excess of live births registered over deaths registered (based on usual State of residence).

(b) Percentage growth from same quarter in previous year.

Source: Australian Demographic Statistics (Cat. no. 3101.0).

2

BIRTHS, DEATHS AND MARRIAGES(a)

	<i>Births</i>		<i>Deaths</i>		<i>Infant mortality(b)</i>		<i>Marriages</i>	
	<i>no.</i>	<i>rate(c)</i>	<i>no.</i>	<i>rate(d)</i>	<i>no.</i>	<i>rate(e)</i>	<i>no.</i>	<i>rate(f)</i>
1997-98	5 870	1.76	3 766	6.6	38	6.5	2 782	5.9
1998-99	6 384	1.95	3 726	6.2	41	6.4	2 483	5.3
1999-2000	5 844	1.82	3 683	6.2	40	6.8	2 648	5.6
1998								
December qtr	1 567	..	907	..	8	5.1	658	..
1999								
March qtr	1 545	..	865	..	9	5.8	858	..
June qtr	1 636	..	923	..	15	9.2	636	..
September qtr p	1 555	..	1 035	..	16	10.3	327	..
December qtr p	1 367	..	905	..	9	6.6	678	..
2000								
March qtr p	1 512	..	864	..	7	4.6	910	..
June qtr p	1 410	..	879	..	8	5.7	733	..
September qtr p	1 405	..	954	..	6	4.3	364	..
December qtr p	1 376	..	1 012	..	8	5.8	582	..

(a) Usual residents of Tasmania.

(b) Deaths of children under one year of age.

(c) Total fertility rate. The sum of age specific fertility rates (live births at each age of a mother per female population of that age). It represents the number of children a woman would bear during her lifetime if she experienced age-specific fertility rates at each age of her reproductive life.

(d) Standardised death rate. The overall death rate, per 1,000 persons, that would have prevailed in a standard population if it had experienced at each age the death rates of the population being studied. The standard population used in these calculations is all persons in the 1991 Australian population.

(e) Rate per 1,000 live births.

(f) Crude marriage rate is the number of marriages registered during the financial year, per 1,000 estimated resident population at 31 December of that year.

Source: Australian Demographic Statistics (Cat. no. 3101.0).

3

LABOUR FORCE STATUS(a) — SEASONALLY ADJUSTED AND TREND

	Seasonally adjusted series(b)				Trend series(b)			
	Employed	Unemployed	Unemployment rate	Participation rate	Employed	Unemployed	Unemployment rate	Participation rate
	'000	'000	%	%	'000	'000	%	%
MALES								
2000								
July	111.1	10.8	8.9	67.6	110.5	12.1	9.8	67.9
August	110.8	12.5	10.1	68.3	110.8	12.1	9.9	68.1
September	110.9	12.4	10.1	68.2	111.2	12.2	9.9	68.3
October	110.8	12.2	9.9	68.1	111.6	12.2	9.9	68.5
November	112.3	12.2	9.8	68.9	112.0	12.2	9.9	68.7
December	112.8	11.8	9.5	68.9	112.1	12.3	9.9	68.8
2001								
January	112.5	12.5	10.0	69.1	112.1	12.3	9.9	68.8
February	111.7	12.9	10.3	68.9	111.7	12.3	9.9	68.5
March	111.1	11.2	9.2	67.6	111.1	12.2	9.9	68.2
April	109.6	13.1	10.7	67.8	110.5	12.1	9.9	67.8
May	110.1	11.9	9.7	67.4	110.0	12.0	9.9	67.4
June	110.1	11.4	9.4	67.1	109.5	11.9	9.8	67.1
July	108.9	11.9	9.8	66.7	109.2	11.8	9.7	66.8
FEMALES								
2000								
July	89.1	7.5	7.8	50.7	89.5	7.5	7.7	50.9
August	89.4	7.7	7.9	50.9	89.6	7.4	7.6	50.9
September	88.6	7.7	8.0	50.5	89.7	7.3	7.5	50.9
October	90.4	6.8	7.0	51.0	89.9	7.2	7.5	50.9
November	90.3	7.3	7.5	51.1	90.1	7.2	7.4	50.9
December	91.2	6.6	6.8	51.2	90.2	7.0	7.2	50.9
2001								
January	89.2	7.8	8.0	50.7	90.2	6.8	7.0	50.8
February	90.5	6.0	6.3	50.5	90.0	6.7	6.9	50.6
March	89.1	6.7	7.0	50.1	89.7	6.6	6.9	50.4
April	89.8	7.0	7.2	50.6	89.3	6.6	6.9	50.2
May	89.4	6.0	6.3	49.8	89.0	6.8	7.1	50.0
June	88.3	6.7	7.0	49.6	88.6	6.9	7.3	50.0
July	87.9	8.2	8.6	50.2	88.4	7.1	7.5	49.9
PERSONS								
2000								
July	200.2	18.3	8.4	58.9	200.0	19.5	8.9	59.2
August	200.2	20.2	9.2	59.4	200.4	19.5	8.9	59.3
September	199.4	20.1	9.1	59.1	201.0	19.5	8.8	59.4
October	201.2	19.0	8.6	59.3	201.5	19.4	8.8	59.5
November	202.5	19.6	8.8	59.8	202.1	19.4	8.8	59.6
December	204.0	18.5	8.3	59.8	202.3	19.3	8.7	59.6
2001								
January	201.6	20.2	9.1	59.7	202.3	19.1	8.6	59.5
February	202.2	18.9	8.6	59.4	201.7	19.0	8.6	59.3
March	200.2	17.9	8.2	58.6	200.8	18.9	8.6	59.0
April	199.3	20.1	9.2	59.0	199.8	18.8	8.6	58.7
May	199.4	17.8	8.2	58.4	199.0	18.8	8.6	58.5
June	198.4	18.1	8.4	58.1	198.2	18.8	8.7	58.3
July	196.9	20.1	9.3	58.3	197.6	18.9	8.7	58.1

(a) For explanation of terms and concepts, refer to *Labour Force, Australia*, Preliminary (Cat. no. 6202.0). At April 2001, estimates for prior periods were revised because of some minor definitional changes.

(b) Seasonal factors are reviewed annually to take account of each additional year's data. The results of the review are used to compile revised seasonally adjusted and trend estimates each February. Trend estimates for the most recent months are also revised each month; see Notes on page 2.

Source: *Labour Force, Australia, Preliminary* (Cat. no. 6202.0).

4

LABOUR FORCE STATUS BY REGION — MALES(a)(b)

	<i>Total employed</i>	<i>Total unemployed</i>	<i>Unemployment rate</i>	<i>Participation rate</i>
	'000	'000	%	%
HOBART AND SOUTHERN STATISTICAL DIVISIONS				
1998				
July	52.3	6.6	11.2	67.4
2000				
July	53.1	5.4	9.3	66.2
2001				
May	51.2	5.5	9.8	65.6
June	51.9	5.4	9.5	65.5
July	51.2	6.2	10.9	65.5
NORTHERN STATISTICAL DIVISION				
1998				
July	29.9	5.5	15.5	70.2
2000				
July	33.4	3.2	8.9	70.2
2001				
May	35.4	2.5	6.7	70.9
June	34.2	3.0	8.1	69.8
July	34.4	3.2	8.5	70.3
MERSEY-LYELL STATISTICAL DIVISION				
1998				
July	25.0	3.7	13.0	67.2
2000				
July	23.8	3.1	11.4	67.8
2001				
May	24.6	2.7	10.0	66.5
June	23.6	2.7	10.4	65.4
July	23.4	2.7	10.2	65.3
TASMANIA				
1998				
July	107.2	15.7	12.8	68.1
2000				
July	110.4	11.7	9.6	67.7
2001				
May	111.1	10.8	8.9	67.4
June	109.6	11.2	9.3	66.7
July	109.0	12.1	10.0	66.9

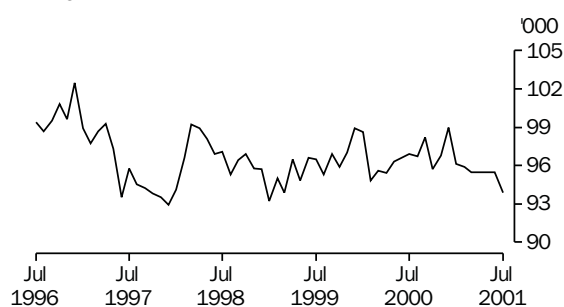
(a) For explanation of terms and concepts, refer to *Labour Force, Australia* (Cat. no. 6203.0).

(b) Data in this table are original series, i.e. they are not part of a seasonally adjusted or a trend series. Accordingly, care should be exercised when using these data.

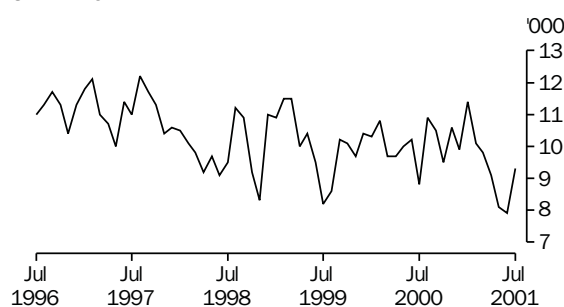
Source: *Labour Force, Selected Summary Tables, Australia* (Cat. no. 6291.0.40.001).

Hobart and Southern Statistical Divisions — Persons (see table 6)

EMPLOYMENT



UNEMPLOYMENT



5

LABOUR FORCE STATUS BY REGION — FEMALE(a)(b)

	<i>Total employed</i>	<i>Total unemployed</i>	<i>Unemployment rate</i>	<i>Participation rate</i>
	'000	'000	%	%
HOBART AND SOUTHERN STATISTICAL DIVISIONS				
1998				
July	44.8	2.9	6.2	51.9
2000				
July	43.8	3.3	7.0	50.6
2001				
May	44.3	2.5	5.4	50.4
June	43.7	2.5	5.4	49.1
July	42.6	3.0	6.6	48.6
NORTHERN STATISTICAL DIVISION				
1998				
July	24.0	2.9	10.9	49.9
2000				
July	25.5	2.2	8.0	50.1
2001				
May	28.0	1.1	3.9	52.6
June	25.4	2.0	7.3	50.2
July	26.1	1.8	6.6	51.6
MERSEY-LYELL STATISTICAL DIVISION				
1998				
July	18.4	1.4	7.2	45.6
2000				
July	19.1	1.2	5.7	48.3
2001				
May	18.0	2.3	11.2	47.5
June	18.8	2.0	9.5	48.7
July	18.8	2.0	9.8	48.1
TASMANIA				
1998				
July	87.2	7.3	7.7	49.9
2000				
July	88.4	6.7	7.0	49.9
2001				
May	90.4	6.0	6.2	50.4
June	87.9	6.5	6.8	49.3
July	87.5	6.9	7.3	49.3

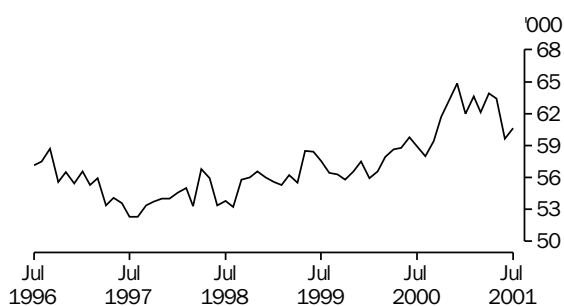
(a) For explanation of terms and concepts, refer to *Labour Force, Australia* (Cat. no. 6203.0).

(b) Data in this table are original series, i.e. they are not part of a seasonally adjusted or a trend series. Accordingly, care should be exercised when using these data.

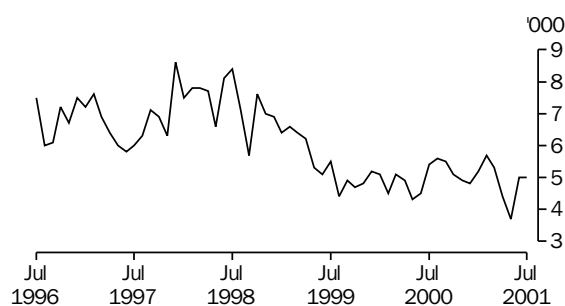
Source: *Labour Force, Selected Summary Tables, Australia* (Cat. no. 6291.0.40.001).

Northern Statistical Division — Persons (see table 6)

EMPLOYMENT



UNEMPLOYMENT



6

LABOUR FORCE STATUS BY REGION — PERSONS(a)(b)

	<i>Total employed</i>	<i>Total unemployed</i>	<i>Unemployment rate</i>	<i>Participation rate</i>
	'000	'000	%	%
HOBART AND SOUTHERN STATISTICAL DIVISIONS				
1998				
July	97.1	9.5	8.9	59.5
2000				
July	96.9	8.8	8.3	58.2
2001				
May	95.5	8.1	7.8	57.7
June	95.5	7.9	7.7	57.0
July	93.9	9.3	9.0	56.8
NORTHERN STATISTICAL DIVISION				
1998				
July	53.8	8.4	13.5	59.7
2000				
July	58.9	5.4	8.5	59.9
2001				
May	63.4	3.7	5.5	61.6
June	59.6	5.0	7.8	59.9
July	60.6	5.0	7.7	60.9
MERSEY-LYELL STATISTICAL DIVISION				
1998				
July	43.4	5.1	10.6	56.3
2000				
July	43.0	4.2	9.0	57.8
2001				
May	42.6	5.0	10.5	56.8
June	42.5	4.7	10.0	56.8
July	42.2	4.7	10.0	56.4
TASMANIA				
1998				
July	194.3	23.0	10.6	58.8
2000				
July	198.9	18.4	8.5	58.6
2001				
May	201.5	16.7	7.7	58.6
June	197.6	17.6	8.2	57.8
July	196.6	19.0	8.8	57.9

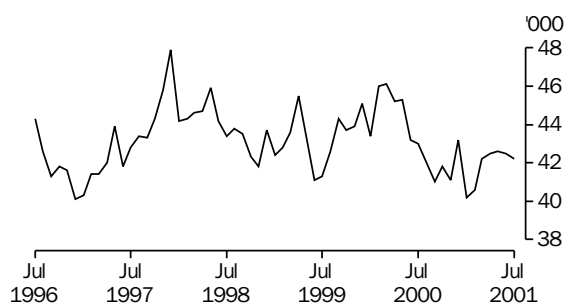
(a) For explanation of terms and concepts, refer to *Labour Force, Australia* (Cat. no. 6203.0).

(b) Data in this table are original series, i.e. they are not part of a seasonally adjusted or a trend series. Accordingly, care should be exercised when using these data.

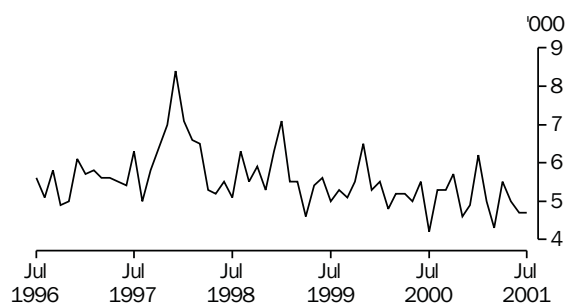
Source: *Labour Force, Selected Summary Tables, Australia* (Cat. no. 6291.0.40.001).

Mersey–Lyell Statistical Division — Persons (see table 6)

EMPLOYMENT



UNEMPLOYMENT



7

TEENAGE LABOUR MARKET(a)

	<i>Employed</i>		<i>Unemployed</i>		<i>Labour force</i>	<i>Not in labour force</i>	<i>Civilian population aged 15–19</i>	<i>Unemployment rate</i>	<i>Unemployment population ratio</i>	<i>Participation rate</i>
	<i>Full time</i>	<i>Total</i>	<i>Looking for full time work</i>	<i>Total</i>						
	'000	'000	'000	'000	'000	'000	'000	%	%	%
ATTENDING NEITHER A SCHOOL NOR A TERTIARY INSTITUTION FULL TIME										
1998										
July	6.7	8.8	2.4	2.6	11.4	0.6	12.0	22.5	21.4	94.7
2000										
July	5.7	8.0	2.7	3.1	11.0	1.4	12.5	27.9	24.7	88.4
2001										
May	6.4	9.3	1.4	1.5	10.8	1.2	12.0	13.8	12.4	89.9
June	7.1	9.5	1.9	2.0	11.5	1.2	12.7	17.3	15.6	90.3
July	6.8	8.9	2.1	2.2	11.1	1.9	13.0	19.6	16.7	85.0
ATTENDING SCHOOL OR A TERTIARY INSTITUTION FULL TIME										
1998										
July	—	6.2	0.4	1.6	7.8	14.6	22.4	20.7	7.2	34.6
2000										
July	—	7.2	0.2	1.1	8.3	14.0	22.3	12.8	4.7	37.0
2001										
May	0.1	7.5	0.2	1.1	8.6	13.9	22.5	12.8	4.9	38.2
June	0.1	5.9	0.6	1.7	7.6	14.2	21.8	21.8	7.6	34.9
July	0.2	5.7	0.7	1.5	7.2	14.2	21.4	20.9	7.0	33.5
TOTAL										
1998										
July	6.7	15.0	2.8	4.2	19.1	15.3	34.4	21.8	12.1	55.6
2000										
July	5.7	15.2	2.9	4.1	19.3	15.5	34.8	21.4	11.9	55.5
2001										
May	6.5	16.8	1.6	2.6	19.4	15.1	34.5	13.4	7.5	56.2
June	7.2	15.4	2.5	3.6	19.1	15.4	34.5	19.1	10.6	55.3
July	6.9	14.6	2.8	3.7	18.2	16.2	34.4	20.1	10.7	53.0

(a) Persons aged 15–19 years. For explanation of terms and concepts, refer to *Labour Force, Australia* (Cat. no. 6203.0). Care should be exercised when using these series as some estimates are subject to high sampling variability.

Source: ABS data available on request, *Labour Force, Estimates; Labour Force, Teenage Employment and Unemployment, Australia, Preliminary, Data Report* (Cat. no. 6202.0.40.001).

8

ALL EMPLOYED PERSONS BY OCCUPATION(a)

	May 2000			May 2001		Proportion of total employed	
	Persons	Males	Females	Persons	May 2000	May 2001	
	'000	'000	'000	'000	%	%	
Managers and administrators							
Generalist managers	2.2	1.7	0.2	1.9	1.1	0.9	
Specialist managers	4.0	3.6	1.2	4.8	2.0	2.4	
Farmers and farm managers	7.5	5.0	1.7	6.7	3.7	3.3	
Total	13.6	10.4	3.0	13.4	6.8	6.6	
Professionals							
Science, building and engineering professionals	3.9	4.6	0.6	5.2	1.9	2.6	
Business and information professionals	5.6	3.0	2.6	5.6	2.8	2.8	
Health professionals	9.2	2.3	5.1	7.4	4.6	3.7	
Education professionals	9.8	2.5	5.2	7.6	4.9	3.8	
Social, arts and miscellaneous professionals	5.5	2.8	2.2	5.0	2.7	2.5	
Total	34.0	15.1	15.6	30.8	17.0	15.3	
Associate professionals							
Science, engineering and related associate professionals	2.7	2.4	0.5	2.9	1.3	1.4	
Business and administration associate professionals	4.4	2.7	2.3	5.0	2.2	2.5	
Managing supervisors (sales and service)	7.9	6.2	4.6	10.9	3.9	5.4	
Health and welfare associate professionals	1.2	0.7	0.7	1.3	0.6	0.7	
Other associate professionals	4.0	2.3	2.2	4.5	2.0	2.2	
Total	18.9	13.7	9.6	23.2	9.5	11.5	
Tradespersons and related workers							
Mechanical and fabrication engineering tradespersons	4.1	5.3	—	5.3	2.0	2.6	
Automotive tradespersons	3.3	3.0	—	3.0	1.6	1.5	
Electrical and electronics tradespersons	4.5	3.9	0.1	4.0	2.2	2.0	
Construction tradespersons	5.4	5.3	—	5.3	2.7	2.7	
Other tradespersons and related workers	10.6	6.1	2.7	8.8	5.3	4.3	
Total	27.8	23.7	2.7	26.4	13.9	13.1	
Advanced clerical and service workers							
Secretaries and personal assistants	2.7	—	2.8	2.8	1.4	1.4	
Other advanced clerical and service workers	3.1	0.4	2.6	3.1	1.6	1.5	
Total	5.8	0.4	5.4	5.9	2.9	2.9	
Intermediate clerical, sales and service workers							
Intermediate clerical workers	18.6	5.1	17.4	22.5	9.3	11.2	
Intermediate sales and related workers	3.3	2.2	1.2	3.4	1.7	1.7	
Intermediate service workers	13.4	2.7	8.6	11.3	6.7	5.6	
Total	35.4	10.0	27.2	37.2	17.6	18.5	
Intermediate production and transport workers							
Intermediate plant operators	6.6	6.9	0.2	7.0	3.3	3.5	
Intermediate machine operators	2.3	1.7	0.6	2.3	1.2	1.2	
Road and rail transport drivers	6.5	6.9	0.6	7.5	3.3	3.7	
Other intermediate production and transport workers	4.3	3.0	0.4	3.4	2.2	1.7	
Total	19.8	18.5	1.8	20.4	9.9	10.1	
Elementary clerical, sales and service workers							
Elementary clerks	1.7	1.0	1.2	2.2	0.9	1.1	
Elementary sales workers	15.6	4.7	13.6	18.3	7.8	9.1	
Elementary service workers	2.2	0.9	0.7	1.6	1.1	0.8	
Total	19.5	6.6	15.5	22.1	9.7	11.0	
Labourers and related workers							
Cleaners	6.1	1.9	4.2	6.1	3.0	3.0	
Factory labourers	6.6	4.2	1.5	5.7	3.3	2.8	
Other labourers and related workers	12.8	6.6	3.8	10.4	6.4	5.2	
Total	25.5	12.7	9.5	22.2	12.7	11.0	
Total employed	200.4	111.1	90.4	201.5	100.0	100.0	

(a) For explanation of terms and concepts, refer to *Labour Force, Australia* (Cat. no. 6203.0).Source: ABS data available on request, *Labour Force, Estimates*.

9

WAGE AND SALARY EARNERS, SECTOR AND INDUSTRY(a)

	<i>Employees, February 2001</i>			<i>Percentage distribution</i>	
	<i>Private</i>	<i>Public</i>	<i>Total</i>	<i>February 2000</i>	<i>February 2001</i>
	'000	'000	'000	%	%
Agriculture, forestry & fishing	n.a.	0.6	0.6	0.4	0.4
Mining	1.5	—	1.5	1.3	0.9
Manufacturing	n.p.	n.p.	19.3	13.4	12.2
Electricity, gas & water supply	—	1.8	1.8	1.2	1.1
Construction	n.p.	n.p.	6.0	2.7	3.8
Wholesale trade	7.6	—	7.6	8.0	4.8
Retail trade	27.4	—	27.4	17.2	17.3
Accommodation, cafes & restaurants	11.2	—	11.2	5.4	7.1
Transport & storage	4.5	0.9	5.5	3.7	3.5
Communication services	n.p.	n.p.	2.5	1.5	1.6
Finance and insurance	3.7	0.2	4.0	2.7	2.5
Property & business services	12.9	0.5	13.4	7.3	8.5
Government administration and defence	—	8.7	8.7	6.0	5.5
Education	2.6	12.4	15.1	9.8	9.5
Health and community services	13.4	8.9	22.3	13.4	14.1
Cultural and recreational services	2.3	1.1	3.4	2.1	2.1
Personal and other services	5.2	2.7	7.9	4.2	5.0
Total all industries	118.2	39.9	158.2	100.0	100.0

(a) For explanation of terms and concepts, refer to *Wage and Salary Earners, Australia* (Cat. no. 6248.0).

Source: *Wage and Salary Earners, Australia* (Cat. no. 6248.0).

10

AVERAGE HOURS WORKED

	<i>Average weekly total hours worked, all employed persons(a)</i>		
	<i>Males</i>	<i>Females</i>	<i>Persons</i>
2000			
February	37.1	24.7	31.6
May	38.9	28.1	34.1
August	38.1	26.7	33.0
November	39.5	27.6	34.2
2001			
February	38.5	26.2	33.0
May	40.4	27.3	34.5

(a) For explanation of terms and concepts, refer to *Labour Force, Australia* (Cat. no. 6203.0).

Source: ABS data available on request; *Labour Force Survey*.

11

JOB VACANCIES(a)(b)

	no. '000	rate(c) %
2000		
February	1.7	1.0
May	1.3	0.8
August	2.5	1.5
November	1.9	1.1
2001		
February	2.1	1.2
May	1.4	0.9

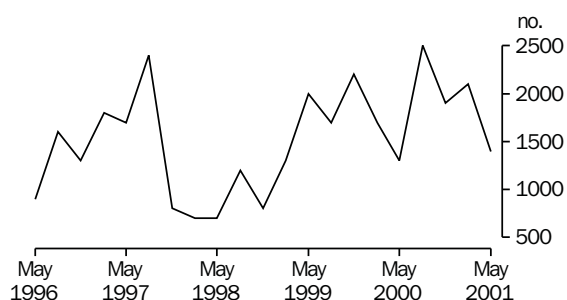
(a) For explanation of terms and concepts, refer to *Job Vacancies, Australia* (Cat. no. 6354.0).

(b) Care should be exercised in using these series as some estimates are subject to high sampling variability.

(c) Job vacancies expressed as a percentage of the number of employees plus job vacancies.

Source: *Job Vacancies, Australia* (Cat. no. 6354.0).

JOB VACANCIES, TASMANIA



12

INDUSTRIAL DISPUTES(a)

	Working days lost '000	Twelve months ended	Working days lost per thousand employees no.
2000			
May	0.2	May	6
June	0.2	June	6
July	—	July	6
August	—	August	6
September	—	September	6
October	—	October	6
November	—	November	6
December	0.2	December	7
2001			
January	—	January	6
February	—	February	6
March	—	March	5
April	0.1	April	4
May	—	May	3
Twelve months ended			
May 2001	0.5

(a) For explanation of terms and concepts, refer to *Industrial Disputes, Australia* (Cat. no. 6321.0).

Source: *Industrial Disputes, Australia* (Cat. no. 6321.0).

AVERAGE WEEKLY EARNINGS OF EMPLOYEES(a) — ORIGINAL AND TREND

	<i>Full-time adult males</i>		<i>All males</i>	<i>Full-time adult females</i>		<i>All females</i>	<i>Full-time adult persons</i>		<i>All employees</i>
	<i>Weekly ordinary time earnings</i>	<i>Weekly total earnings</i>	<i>Weekly total earnings</i>	<i>Weekly ordinary time earnings</i>	<i>Weekly total earnings</i>	<i>Weekly total earnings</i>	<i>Weekly ordinary time earnings</i>	<i>Weekly total earnings</i>	<i>Weekly total earnings</i>
	\$	\$	\$	\$	\$	\$	\$	\$	\$
ORIGINAL									
2000									
February	767.70	799.30	686.20	639.60	656.70	444.20	723.90	750.60	566.70
May	788.10	828.20	695.80	643.40	659.10	428.00	737.20	768.80	558.10
August	784.20	819.60	677.60	645.40	660.90	422.90	736.50	765.10	547.40
November	784.60	824.70	683.20	663.40	685.10	431.00	741.30	774.80	549.50
2001									
February	786.20	819.50	678.00	676.90	688.80	462.00	745.80	771.20	568.40
May	788.70	820.90	685.20	691.30	704.10	462.90	755.90	781.50	576.60
TREND(b)									
2000									
February	771.90	807.10	684.80	639.40	655.60	434.60	725.30	754.10	558.30
May	782.20	818.90	689.10	644.70	662.30	431.00	735.20	765.00	557.90
August	786.60	825.20	687.80	650.30	667.90	428.50	739.30	770.40	553.50
November	785.40	823.30	681.90	660.70	677.00	436.30	740.70	771.10	554.30
2001									
February	785.10	818.90	676.80	674.90	689.40	450.50	745.20	772.40	561.70
May	787.70	816.30	675.00	691.20	704.00	465.20	754.50	777.00	572.80

(a) For explanation of terms and concepts, refer to *Average Weekly Earnings, Australia* (Cat. no. 6302.0).

(b) ABS trend estimates for the most recent months are revised, see Notes on page 2.

Source: *Average Weekly Earnings, Australia* (Cat. no. 6302.0).

	Index numbers				Percentage change	
	Sep qtr 2000	Dec qtr 2000	Mar qtr 2001	June qtr 2001	Dec qtr 2000 to Mar qtr 2001	Mar qtr 2001 to June qtr 2001
SELECTED INDUSTRIES(c)						
Manufacturing	107.6	108.5	109.2	109.9	0.6	0.6
Retail trade	108.0	108.9	109.1	109.5	0.2	0.4
Government administration and defence	106.8	107.5	107.9	108.9	0.4	0.9
Education	110.9	111.0	111.4	114.2	0.4	2.5
Health and community services	106.3	107.5	107.7	108.6	0.2	0.8
All industries(d)	108.1	108.9	109.5	110.3	0.6	0.7
SELECTED OCCUPATIONS						
Professionals	109.3	109.8	110.4	111.8	0.5	1.3
Associate professionals	107.9	109.7	110.2	110.7	0.5	0.5
Tradespersons & related workers	107.6	108.2	109.0	109.1	0.7	0.1
Intermediate clerical, sales & service workers	107.8	108.1	108.9	110.2	0.7	1.2
Intermediate production & transport workers	107.5	108.2	109.1	110.0	0.8	0.8
Elementary clerical, sales & service workers	109.9	110.9	111.3	112.1	0.4	0.7
Labourers & related workers	107.3	108.1	108.5	109.4	0.4	0.8
All occupations	108.1	108.9	109.5	110.3	0.6	0.7

(a) Base of each index: September quarter 1997 = 100.0.

(b) These indexes are a measure of quarterly changes in wage and salary costs for employee jobs. They are one of four sets of indexes that together comprise the Wage Cost Index. For explanation of terms and concepts, refer to *Wage Cost Index, Australia* (Cat. no. 6345.0).

(c) Industry is shown at the ANZSIC division level for selected divisions.

(d) Excludes Agriculture, forestry and fishing.

Source: ABS data available on request; Wage Cost Index

15

SUMMARY OF ANNUAL MOVEMENTS IN WAGES AND PRICES(a), PERCENTAGE CHANGE FROM PREVIOUS YEAR

	CPI all groups–Hobart(a) %	Price index of materials used in house building all groups–Hobart %	Price index of materials used in building other than house building all groups–Hobart %	Average weekly total earnings, full-time adult employees(b) %
1998–99	1.0	1.0	0.9	2.4
1999–2000	1.9	1.3	0.4	2.5
2000–01	5.8	1.8	0.3	3.2
1999				
June	0.4	–0.1	0.2	–0.3
September	0.4	–0.3	0.1	0.8
December	1.1	0.2	–0.2	2.3
2000				
March	2.6	2.0	0.6	0.6
June	3.3	3.4	1.2	6.5
September	6.5	(c)2.5	(c)–0.5	5.4
December	5.8	2.4	0.6	3.1
2001				
March	5.4	1.4	0.8	2.7
June	5.5	0.8	0.3	1.7

(a) See note 5 on page 2 of this issue on the impacts of The New Tax System (TNTS).

(b) March, June, September and December data relates to February, May, August and November survey dates as published in *Average Weekly Earnings, Australia* (Cat. no. 6302.0).

(c) This quarter affected by the removal of the Wholesale Sales Tax from 1 July 2000.

Source: ABS data available on request; Producer Price Index (Cat. no. 6427.0); Consumer Price Index, Australia (Cat. no. 6401.0); Average Weekly Earnings, Australia (Cat. no. 6302.0).

16

HOUSE PRICE INDEX NUMBERS(a)(b)

	Established house price index		Project home price index	
	Index	% change(c)	Index	% change(c)
1997–98	125.4	–2.4	123.3	—
1998–99	123.2	–1.8	123.3	—
1999–2000	129.0	4.7	126.2	2.4
1999				
March	123.7	1.6	123.3	—
June	123.6	–0.1	123.3	—
September	125.3	1.4	124.0	0.6
December	127.8	2.0	125.4	1.1
2000				
March	128.6	0.6	127.5	1.7
June	134.2	4.4	127.9	0.3
September	134.3	0.1	(d)140.3	(d)9.7
December	133.7	–0.4	140.3	—
2001				
March	133.8	0.1	140.5	0.1

(a) Base of each Index: 1989–90 = 100.

(b) Used in calculating the mortgage interest charges component of the Consumer Price Index.

(c) Percentage change over previous period.

(d) See note 5 on page 2 of this issue on the impacts of The New Tax System (TNTS) introduced on 1 July 2000.

Source: House Price Indexes: Eight Capital Cities (Cat. no. 6416.0).

Hobart

	Food	Clothing and Footwear	Housing	Household furnishings, supplies and services	Transportation	Alcohol and tobacco
1998						
June	122.3	105.3	95.5	119.5	120.5	160.2
September	124.7	105.1	95.6	120.4	120.4	159.6
December	125.0	105.7	95.4	120.8	118.6	159.1
1999						
March	125.5	104.7	95.8	119.5	118.4	161.5
June	126.8	104.6	95.9	119.4	120.4	160.0
September	126.3	104.5	96.9	119.3	123.1	158.1
December	127.5	103.9	97.4	119.1	123.8	163.3
2000						
March	127.8	104.9	98.8	120.2	126.6	167.2
June	129.1	105.0	99.2	121.2	129.3	169.9
September	130.9	112.8	105.5	124.5	133.3	179.8
December	132.0	112.9	105.8	124.6	130.4	181.6
2001						
March	134.3	110.7	106.9	125.6	131.4	185.4
June	136.0	112.2	107.2	126.6	134.6	188.6

Hobart

Weighted average of eight capital cities

	Health	Education	Index, all groups	% change over previous period, all groups	Index	% change over previous period
1998						
June	183.0	190.0	122.0	0.4	121.0	0.6
September	190.4	190.0	122.8	0.7	121.3	0.2
December	187.7	190.0	122.7	-0.1	121.9	0.5
1999						
March	164.9	198.8	122.1	-0.5	121.8	-0.1
June	165.7	198.8	122.5	0.3	122.3	0.4
September	173.3	198.8	123.3	0.7	123.4	0.9
December	172.0	198.8	124.0	0.6	124.1	0.6
2000						
March	175.1	206.2	125.3	1.0	125.2	0.9
June	177.7	206.2	126.5	1.0	126.2	0.8
September	178.0	206.5	131.3	3.8	130.9	3.7
December	177.4	206.5	131.2	-0.1	131.3	0.3
2001						
March	181.5	215.1	132.1	0.7	132.7	1.1
June	181.4	215.1	133.4	1.0	133.8	0.8

(a) Base year: 1989-90 = 100.

(b) Further information on construction of CPI indexes is contained in the bulletin *Australian Consumer Price Index Concepts, Sources and Methods* (Cat. no. 6461.0).(c) As a result of the introduction of the 14th Series Australian CPI there have been changes to some groups and restructuring of some others. See Appendix A4 of the September quarter issue of *Consumer Price Index, Australia* (Cat. no. 6401.0) for more information.

(d) See Note 5 on page 2 of this issue on the impacts of The New Tax System (TNTS) introduced on 1 July 2000.

Source: *Consumer Price Index, Australia* (Cat. no. 6401.0).

Index numbers for selected major building materials

	<i>Structural timber</i>	<i>Clay bricks</i>	<i>Ready mixed concrete</i>	<i>Precast concrete products</i>	<i>Steel decking, cladding etc.</i>	<i>Structural steel</i>
1998-99	109.1	130.8	119.5	131.6	110.8	128.0
1999-2000	114.4	129.1	118.1	131.6	109.6	128.8
2000-01	120.6	132.6	117.9	131.6	107.6	129.3
1999						
June	109.2	130.8	117.9	131.5	110.3	128.1
September	108.2	126.9	119.4	131.6	113.7	128.8
December	111.7	126.9	118.0	131.6	104.6	128.8
2000						
March	116.9	130.9	117.5	131.6	110.1	128.8
June	120.7	131.6	117.5	131.6	109.8	128.8
September(c)	120.9	131.6	117.6	131.6	106.4	129.1
December	120.9	131.8	117.6	131.6	108.2	129.4
2001						
March	121.4	131.8	119.4	131.6	108.2	129.4
June	119.1	135.3	116.9	131.6	107.5	129.4

Index numbers for selected major building materials

	<i>Reinforcing steel bar, fabric and mesh</i>	<i>Aluminium windows</i>	<i>Fabricated steel products</i>	<i>Builders hardware</i>	<i>Sand and aggregate</i>	<i>Paint and other coatings</i>	<i>Non-ferrous pipes and fittings</i>
1998-99	113.4	107.3	116.0	113.4	127.9	133.3	161.2
1999-2000	110.5	108.5	114.0	116.0	144.0	133.7	168.2
2000-01	107.8	116.8	114.0	119.3	147.9	135.0	185.6
1999							
June	113.4	107.0	115.6	111.3	127.9	132.5	160.2
September	113.4	107.0	116.1	110.8	135.4	131.7	162.4
December	110.2	107.0	113.6	114.8	139.4	133.5	166.0
2000							
March	109.1	109.9	113.1	120.2	150.4	135.2	167.2
June	109.1	110.1	113.1	118.1	150.9	134.2	177.0
September(c)	107.8	110.1	113.1	117.3	145.5	131.8	177.2
December	107.9	116.6	113.0	118.8	146.1	135.7	183.8
2001							
March	107.8	120.3	116.1	119.6	151.6	136.2	193.1
June	107.8	120.3	113.9	121.4	148.4	136.2	188.1

...continued

	<i>All electrical materials</i>		<i>All mechanical services</i>		<i>All plumbing materials</i>	
	<i>Index</i>	<i>% change over previous period</i>	<i>Index</i>	<i>% change over previous period</i>	<i>Index</i>	<i>% change over previous period</i>
1998-99	115.8	-1.2	119.0	1.7	124.5	2.1
1999-2000	117.6	1.6	120.3	1.1	127.0	2.0
2000-01	117.3	-0.3	118.2	-1.7	132.7	4.5
1999						
June	115.2	—	119.5	0.1	124.5	0.1
September	115.9	0.6	119.3	-0.2	122.3	-1.8
December	117.5	1.4	119.8	0.4	126.5	3.4
2000						
March	118.3	0.7	120.3	0.4	128.0	1.2
June	118.7	0.3	121.9	1.3	131.0	2.3
September(c)	115.8	-2.4	117.3	-3.8	129.1	-1.5
December	117.6	1.6	118.0	0.6	131.8	2.1
2001						
March	117.8	0.2	118.4	0.3	136.0	3.2
June	117.9	0.1	119.0	0.5	134.0	-1.5

	<i>All groups excluding electrical materials and mechanical services</i>		<i>All groups</i>	
	<i>Index</i>	<i>% change over previous period</i>	<i>Index</i>	<i>% change over previous period</i>
1998-99	118.8	0.7	118.5	0.9
1999-2000	119.1	0.3	119.0	0.4
2000-01	120.5	1.2	119.3	0.3
1999				
June	118.4	-0.3	118.3	-0.2
September	118.8	0.3	118.5	0.2
December	118.4	-0.3	118.4	-0.1
2000				
March	119.3	0.8	119.2	0.7
June	119.7	0.3	119.7	0.4
September(c)	118.8	-0.8	117.9	-1.5
December	120.1	1.1	119.1	1.0
2001				
March	121.7	1.3	120.2	0.9
June	121.3	-0.3	120.1	-0.1

(a) Base year: 1989-90 = 100.

(b) Index numbers in this table have been recompiled to reflect the change to a quarterly collection basis from June 1997.

(c) This quarter affected by the removal of the Wholesale Sales Tax from 1 July 2000.

Source: ABS data available on request; Producer Price Index (Cat. no. 6427.0).

	<i>Dairy products(a)</i>			<i>Staff hours worked</i>	
	<i>Whole milk(b)</i>	<i>Factory butter(c)</i>	<i>Factory cheese</i>	<i>Textile manufacturing(d)</i>	<i>Vegetable preserving</i>
	<i>million litres</i>	<i>tonnes</i>	<i>tonnes</i>	<i>'000</i>	<i>'000</i>
1998-99	603.4	11 546	29 973	1 061	1 084
1999-2000	608.6	8 209	33 344	1 032	1 019
2000-01	589.3	n.y.a.	n.y.a.	938	1 037
2000					
June	17.5	465	683	83	90
July	12.9	266	333	82	80
August	26.1	210	990	100	97
September	62.0	203	3 611	75	62
October	71.0	865	3 590	97	62
November	84.1	1 080	4 078	96	100
December	72.9	1 101	4 039	60	86
2001					
January	62.1	277	3 383	50	65
February	49.1	387	2 665	83	97
March	44.1	484	2 607	74	94
April	41.8	377	2 847	53	90
May	40.0	n.y.a.	n.y.a.	94	119
June	23.2	n.y.a.	n.y.a.	75	85

	<i>Refined zinc</i>	<i>Metallurgical refining</i>	<i>Electricity(f)</i>
	<i>'000 tonnes</i>	<i>Index(e)</i>	<i>million kW.h</i>
1998-99	214.3	125.0	9 910
1999-2000	231.7	133.2	10 050
2000-01	233.1	138.4	10 150
2000			
June	18.7	137.2	(June qtr) 2 620
July	20.6	144.0	..
August	21.0	143.8	..
September	18.0	134.3	(Sept qtr) 2 760
October	20.5	145.1	..
November	18.5	136.2	..
December	12.5	126.0	(Dec qtr) 2 410
2001			
January	20.1	140.3	..
February	18.8	136.1	..
March	20.0	141.9	(Mar qtr) 2 360
April	19.3	137.0	..
May	22.3	139.9	..
June	21.6	136.1	(June qtr) 2 620

(a) Source: Australian Dairy Corporation.

(b) Includes the whole milk equivalent of farm cream intake.

(c) Includes butter equivalent of butter oil.

(d) Includes spinning, weaving and carpet making. Reported by establishments which manufacture textiles only, or manufacture clothing and textiles in the one plant.

(e) Metallurgical refining index (Base year: 1979-80 = 100.0). Output from selected establishments covering the smelting and refining of ferro-alloys, zinc and aluminium. The weighting pattern is based on the establishments' value added as derived from the 1979-80 manufacturing Census. For multi product establishments, value added was apportioned to products on the basis of gross receipts from each product.

(f) Collected on a quarterly basis as from 1997.

Source: ABS data available on request; Employees Hours Worked Survey; Monthly Production Survey; Manufacturing Survey.

20

LIVESTOCK SLAUGHTERING — ORIGINAL

	Cattle					
	Bulls, bullocks and steers	Cows and heifers	Calves	Sheep	Lambs	Pigs
	'000	'000	'000	'000	'000	'000
1998–99	94.8	116.3	61.0	439.9	480.1	81.2
1999–2000	109.0	108.9	62.1	589.9	456.3	70.1
2000–01	90.2	94.2	49.7	365.0	416.1	57.6
1999						
June	10.2	11.0	1.0	40.5	43.8	8.8
2000						
June	9.1	12.9	0.9	51.5	44.1	6.7
July	7.0	6.7	1.2	23.0	36.2	5.0
August	5.7	3.7	15.2	17.9	39.1	4.8
September	6.2	4.3	22.9	18.7	37.9	4.8
October	5.9	5.8	5.6	24.3	32.2	4.1
November	7.1	6.9	0.9	20.7	31.0	4.0
December	9.4	9.6	0.2	35.0	40.7	5.3
2001						
January	8.8	7.7	0.2	41.0	32.1	3.8
February	9.5	9.2	0.1	47.6	33.1	4.2
March	10.5	10.8	0.6	55.1	37.8	5.7
April	6.5	8.6	1.1	26.9	25.7	4.9
May	6.6	9.2	1.0	29.0	27.4	5.0
June	7.0	11.7	0.6	25.8	42.7	5.9

Source: ABS data available on request; Livestock Slaughtered.

21

LIVESTOCK SLAUGHTERING — SEASONALLY ADJUSTED(a) AND TREND(b)

	Seasonally adjusted			Trend		
	Cattle and calves	Sheep and lambs	Pigs	Cattle and calves	Sheep and lambs	Pigs
	'000	'000	'000	'000	'000	'000
1999						
June	23.3	82.0	6.8	23.8	80.2	6.8
2000						
June	22.2	92.0	5.1	20.4	86.9	5.2
July	18.6	75.3	5.1	19.2	85.5	5.0
August	16.2	89.1	4.6	18.4	82.7	4.9
September	19.6	84.5	5.1	18.2	78.3	4.8
October	18.3	79.2	4.9	18.5	73.2	4.7
November	17.9	50.8	4.1	19.4	68.3	4.7
December	20.4	69.2	5.0	20.5	64.3	4.7
2001						
January	22.4	58.5	4.4	21.1	61.7	4.8
February	21.1	61.3	4.9	21.0	60.5	4.9
March	24.0	71.1	5.3	20.4	60.2	4.9
April	17.5	50.8	5.5	19.5	59.8	4.9
May	15.1	54.1	4.2	18.6	59.7	4.9
June	19.4	66.0	4.8	17.7	58.8	4.8

(a) Seasonally adjusted factors are reviewed annually to take account of each additional year's original data. The results of the review are used to compile revised seasonally adjusted and trend estimates; see Notes page 2.

(b) ABS trend estimates for the most recent months are revised; see Notes page 2.

Source: ABS data available on request; Livestock Slaughtered.

22

MEAT PRODUCTION(a)

	<i>Beef</i>	<i>Veal</i>	<i>Mutton</i>	<i>Lamb</i>	<i>Pig meat(b)</i>	<i>Total</i>
	<i>tonnes</i>	<i>tonnes</i>	<i>tonnes</i>	<i>tonnes</i>	<i>tonnes</i>	<i>tonnes</i>
1998-99	53 271	1 241	8 724	9 222	5 242	77 700
1999-2000	57 557	1 236	11 796	8 833	4 403	83 825
2000-01	48 770	996	7 235	8 014	3 582	68 598
1999						
June	5 561	21	802	851	584	7 819
2000						
June	5 529	20	1 012	867	436	7 863
July	3 581	26	445	693	324	5 068
August	2 528	293	338	771	299	4 230
September	2 884	444	363	737	304	4 733
October	3 181	112	478	617	257	4 646
November	3 908	21	415	595	254	5 194
December	5 200	8	717	780	325	7 030
2001						
January	4 511	7	826	612	235	6 191
February	4 980	5	948	636	253	6 821
March	5 549	14	1 099	723	349	7 733
April	3 811	26	525	492	302	5 155
May	4 009	25	571	529	310	5 444
June	4 628	15	510	829	370	6 353

(a) Carcass weight.

(b) Includes pork used for production of bacon and ham.

Source: ABS data available on request; Livestock Slaughtered.

23

PRINCIPAL MINERAL CONCENTRATES PRODUCED

	<i>Copper</i>	<i>Iron (pellets)</i>	<i>Lead</i>	<i>Lead-zinc</i>	<i>Tin</i>	<i>Zinc</i>
	<i>'000 tonnes</i>	<i>'000 tonnes</i>	<i>'000 tonnes</i>	<i>'000 tonnes</i>	<i>'000 tonnes</i>	<i>'000 tonnes</i>
1997-98	109.6	820.8	84.6	26.2	16.2	335.4
1998-99	113.5	1 816.1	101.8	12.6	12.5	382.3
1999-2000	104.3	2 068.3	98.7	7.9	14.8	311.9
1999						
March	30.5	481.2	29.5	2.5	3.7	97.1
June	27.3	403.4	24.7	1.5	3.6	98.0
September	27.5	479.5	28.4	2.7	3.9	94.8
December	26.9	568.2	28.1	2.5	4.0	86.2
2000						
March	26.2	517.7	22.4	1.4	3.3	70.4
June	23.8	502.9	19.8	1.3	3.6	60.4
September	21.6	544.2	7.7	—	3.2	26.8
December	24.9	500.7	9.7	—	3.4	33.5
2001						
March	n.y.a.	534.9	12.1	—	3.9	43.2
June	n.y.a.	n.y.a.	p 11.2	—	p 4.3	p 37.8

Source: Mineral Resources Tasmania, Department of Infrastructure, Energy and Resources.

	<i>Tasmanian-grown logs delivered</i>					<i>Sawn, peeled and sliced timber produced(a)</i>				
	<i>Eucalypts</i>	<i>Hardwoods, excluding eucalypts(b)</i>	<i>Plant- ation(c) softwoods</i>	<i>Native soft- woods(d)</i>	<i>Total</i>	<i>Eucalypts</i>	<i>Hardwoods, excluding eucalypts(b)</i>	<i>Plant- ation(c) softwoods</i>	<i>Native soft- woods(d)</i>	<i>Total</i>
	'000 m ³	'000 m ³	'000 m ³	'000 m ³	'000 m ³	'000 m ³	'000 m ³	'000 m ³	'000 m ³	'000 m ³
1997-98	496.8	24.3	357.7	1.6	880.3	171.1	5.3	167.3	0.4	344.2
1998-99	499.9	22.6	351.9	1.0	875.4	159.7	5.1	169.7	0.3	334.8
1999-2000	510.1	28.8	396.2	0.9	936.9	169.7	5.3	190.6	0.4	366.0
1999										
March	110.8	9.7	90.7	0.2	211.4	35.4	0.8	42.6	—	78.9
June	124.6	6.1	91.3	0.3	222.3	39.6	1.7	43.1	0.1	84.5
September	136.0	6.3	109.4	0.2	252.0	46.2	1.3	49.1	0.1	96.8
December	132.5	5.1	87.8	0.2	225.6	45.8	1.5	46.5	0.1	93.9
2000										
March	104.3	10.0	100.7	0.4	215.3	37.8	1.3	47.8	0.1	87.0
June	137.3	7.3	98.2	0.2	243.1	39.8	1.3	47.3	0.1	88.3
September	130.7	5.0	103.8	0.3	239.9	42.4	1.7	46.6	0.1	90.9
December	118.1	4.3	82.7	0.2	205.2	41.6	1.3	41.4	—	84.3
2001										
March	105.3	6.7	91.9	1.8	205.6	37.2	1.5	42.4	0.1	81.2

(a) Includes plywood, veneer and sliced timber production converted to an equivalent cubic measurement.

(b) Includes blackwood, myrtle, sassafras etc.

(c) Radiata pine.

(d) Includes Huon pine, celery top pine and King William pine.

Source: ABS data available on request; Forest Products Survey.

25

CHIPPING AND GRINDING OF WOOD(a)

	Producing locations(b)	Materials used(c)		Chipped and ground wood production '000 tonnes green weight
		Logs delivered(d)	Sawmill offcuts	
	no.	'000 m ³	'000 m ³	
1997-98	28	3 998.1	457.9	4 440.1
1998-99	29	3 459.6	373.4	3 929.9
1999-2000	30	4 526.8	452.5	5 145.3
1999				
March	29	862.9	79.2	997.7
June	29	925.9	94.9	1 061.1
September	30	1 056.8	134.1	1 225.3
December	30	1 103.8	96.4	1 207.3
2000				
March	30	1 152.1	104.6	1 308.7
June	30	1 214.1	117.4	1 404.0
September	31	1 259.5	104.0	1 451.7
December	30	1 328.2	120.3	1 420.6
2001				
March	30	1 177.9	89.4	1 236.4

(a) Both hardwoods and softwoods, separate details are not available.

(b) Capable of producing at end of year or actually producing during quarter.

(c) Data reported by weight, converted to cubic measure by the factor of 0.95 m³ per tonne.

(d) Includes log equivalent of limbwood and billets.

Source: ABS data available on request; Forest Products Survey.

26

LOGS DELIVERED FOR MILLING OR CHIPPING

	Sawmilling and plywood milling			Chipping and grinding(a)			Total		
	Crown land(b)	Private land	Total	Crown land(b)	Private land	Total	Crown land(b)	Private land	Total
	'000 m ³	'000 m ³	'000 m ³	'000 m ³	'000 m ³	'000 m ³	'000 m ³	'000 m ³	'000 m ³
1997-98	750.7	129.6	880.3	1 894.9	2 103.1	3 998.1	2 645.7	2 232.7	4 878.3
1998-99	754.2	121.2	875.4	1 562.6	1 897.0	3 459.6	2 316.7	2 018.2	4 334.9
1999-2000	834.4	101.6	935.9	2 440.5	2 086.3	4 526.8	3 274.9	2 187.8	5 462.7
1999									
March	184.1	27.3	211.4	367.0	495.8	862.9	551.1	523.2	1 074.3
June	196.2	26.1	222.3	432.1	493.8	925.9	628.3	519.9	1 148.2
September	221.8	30.2	252.0	554.0	502.7	1 056.8	775.8	532.9	1 308.7
December	202.5	23.1	225.6	643.1	460.7	1 103.8	845.6	483.8	1 329.4
2000									
March	192.1	23.2	215.3	585.3	566.9	1 152.1	777.3	590.1	1 367.4
June	218.0	25.1	243.1	658.1	555.9	1 214.1	876.1	581.0	1 457.1
September	219.7	20.2	239.9	729.7	529.8	1 259.5	949.4	550.1	1 499.4
December	184.3	20.9	205.2	779.7	548.5	1 328.2	964.0	569.5	1 533.5
2001									
March	181.1	24.5	205.6	651.7	526.3	1 177.9	832.8	550.8	1 383.6

(a) Logs used are generally below sawmilling standard: includes log equivalent of limbwood and billets.

(b) Comprises all areas (including concession areas) from which royalties are payable to Forestry Tasmania.

Source: ABS data available on request; Forest Products Survey.

							Value(e)		
	Dwelling units				Alterations and additions to residential buildings(c)		Non-residential buildings(d)		Total of all building
	New houses	New other residential buildings(a)	Other dwelling units created (conversions etc.)(b)	Total dwelling units			Private	Total	
	no.	no.	no.	no.	\$m	\$m	\$m	\$m	\$m
1998–99	1 297	104	9	1 410	131.2	36.8	115.8	174.6	342.6
1999–2000	1 608	230	55	1 893	193.4	50.7	120.7	160.6	404.7
2000–01	1 108	82	6	1 196	127.6	43.1	95.3	152.6	323.3
2000									
June	84	4	3	91	10.3	4.3	6.4	16.7	31.2
July	83	—	1	84	7.9	2.6	4.3	7.3	17.7
August	82	—	1	83	8.9	4.1	4.7	10.7	23.7
September	100	19	—	119	12.7	2.2	21.5	23.2	38.1
October	105	16	—	121	13.5	4.5	9.5	12.6	30.7
November	112	4	—	116	12.2	3.5	9.6	13.1	28.8
December	53	4	—	57	6.3	3.2	9.4	12.4	22.0
2001									
January	89	2	2	93	9.5	3.3	1.9	16.5	29.4
February	83	23	—	106	11.2	4.2	3.3	4.1	19.5
March	84	4	—	88	9.5	4.1	5.3	8.1	21.7
April	65	3	—	68	7.5	3.3	7.4	11.0	21.8
May	133	—	1	134	14.2	4.6	12.4	26.7	45.6
June	119	7	1	127	14.1	3.7	6.1	6.8	24.5

(a) New individual dwelling units (e.g. flats, home units and villa units).

(b) From alterations and additions to residential building, conversions of non-residential building to residential building etc.

(c) Valued at \$10,000 and over. Includes conversions and dwelling units approved as part of alterations and additions or as part of the construction of non-residential building.

(d) Comprises non-residential building (new plus alterations and additions) valued at \$50,000 and over.

(e) Value data from July 2000 reference month onward are recorded inclusive of GST. See Cat. no. 8731.0 or page 2 of this publication for more details.

Source: *Building Approvals, Australia* (Cat. no. 8731.0).

	Total number of dwellings(a)			Total value of commitments(b)		
	Original	Seasonally adjusted	Trend	Original	Seasonally adjusted	Trend
	no.	no.	no.	\$m	\$m	\$m
2000						
June	946	978	987	71	77	76
July	1 101	1 134	1 031	81	82	79
August	1 147	1 049	1 066	86	81	80
September	948	1 015	1 087	71	75	80
October	1 075	1 073	1 092	78	78	78
November	1 162	1 082	1 087	83	79	76
December	1 095	1 228	1 071	75	80	73
2001						
January	899	1 017	1 048	58	64	72
February	875	884	1 023	65	65	72
March	1 131	1 065	1 000	84	77	74
April	957	969	989	73	76	76
May	1 132	987	985	89	79	80
June	963	1 023	982	79	88	83

(a) Includes new dwellings, established dwellings and refinancing. Excludes alterations and additions.

(b) Commitment is a firm offer of housing finance. It either has been, or is normally expected to be, accepted. Includes commitments to provide housing finance to employees and commitments accepted and cancelled in the same month. Excludes alterations and additions. Includes refinancing.

Source: Housing Finance for Owner Occupation, Australia (Cat. no. 5609.0).

	ASSET			INDUSTRY			
	Buildings and structures	Equipment, plant and machinery	Total asset	Mining	Manufacturing	Other selected industries	Total all industries
	\$m	\$m	\$m	\$m	\$m	\$m	\$m
1997-98	169	477	646	85	239	322	646
1998-99	130	345	475	48	144	283	475
1999-2000	70	385	456	53	128	275	456
1999							
March	30	85	115	10	38	67	115
June	35	89	124	13	44	67	124
September	14	83	97	10	35	52	97
December	15	98	114	8	33	73	114
2000							
March	14	74	88	14	25	49	88
June	28	130	157	20	36	101	157
September	30	100	130	35	35	61	130
December	24	117	141	15	40	86	141
2001							
March	21	86	107	11	28	68	107

(a) Estimates based on a sample survey and therefore subject to sampling variability. Covers selected industries only — mining, manufacturing, finance, property and other selected industries.

(b) Current prices.

(c) See Cat. no. 5646.0 or page 2 of this issue on the impacts of The New Tax System (TNTS) introduced on 1 July 2000.

Source: Private New Capital Expenditure, State Estimates (Cat. no. 5646.0).

	<i>Deposits</i>				
	<i>Current bearing interest</i>	<i>Current not bearing interest</i>	<i>Fixed</i>	<i>Investment savings accounts</i>	<i>Statement savings accounts</i>
	\$m	\$m	\$m	\$m	\$m
2000					
June	1 241	274	1 108	299	226
July	1 250	264	1 202	275	228
August	1 280	259	1 222	280	243
September	1 271	270	1 198	281	244
October	1 298	279	1 228	280	247
November	1 270	284	1 154	277	249
December	1 329	308	1 196	276	251
2001					
January	1 319	296	1 243	275	248
February	1 300	273	1 236	275	249
March	1 332	295	1 243	279	251
April	1 338	296	1 132	281	255
May	1 322	287	1 214	283	266
June	1 382	289	1 106	292	275

	<i>Deposits</i>			<i>Loans(b)</i>
	<i>Passbook/school savings accounts</i>	<i>Other</i>	<i>Total</i>	
	\$m	\$m	\$m	
2000				
May	54	84	3 281	5 116
June	37	84	3 269	5 128
July	39	83	3 341	5 229
August	39	86	3 408	5 143
September	40	89	3 392	5 099
October	39	88	3 459	5 103
November	39	85	3 359	5 147
December	39	85	3 484	5 195
2001				
January	39	87	3 508	5 222
February	39	91	3 463	5 254
March	39	98	3 536	5 232
April	39	92	3 433	5 228
May	39	94	3 505	5 427
June	40	105	3 489	5 327

(a) Details are the averages of weekly figures for each month. The figures are derived from returns submitted by banks authorised under the Banking Act together with similar returns voluntarily submitted by the State banks; they exclude the Reserve Bank.

(b) Excludes non-resident loans.

Source: Reserve Bank of Australia.

	<i>Establish- ments</i>	<i>Guest rooms</i>	<i>Bed spaces</i>	<i>Persons employed</i>	<i>Room nights occupied</i>	<i>Room occupancy rate</i>	<i>Guest nights</i>	<i>Bed occupancy rate</i>	<i>Guest arrivals</i>	<i>Takings from accommodation(b)</i>
	<i>no.</i>	<i>no.</i>	<i>no.</i>	<i>no.</i>	<i>'000</i>	<i>%</i>	<i>'000</i>	<i>%</i>	<i>'000</i>	<i>\$'000</i>
LICENSED HOTELS WITH FACILITIES										
2000										
March qtr	55	2 931	8 082	3 027	172.8	65.0	292.4	39.9	164.3	15 184
2001										
January	n.a.	n.a.	n.a.	n.a.	56.0	62.0	100.6	40.6	56.5	5 424
February	n.a.	n.a.	n.a.	n.a.	53.6	65.7	86.4	38.6	51.1	5 077
March	n.a.	n.a.	n.a.	n.a.	64.7	71.6	105.2	42.4	62.4	6 153
March qtr	54	2 915	7 999	2 822	174.3	66.4	292.1	40.6	170.1	16 653
MOTELS AND GUEST HOUSES WITH FACILITIES										
2000										
March qtr	51	1 747	5 415	754	103.4	65.0	196.3	39.8	112.0	8 629
2001										
January	n.a.	n.a.	n.a.	n.a.	33.8	65.4	70.9	44.3	36.7	3 204
February	n.a.	n.a.	n.a.	n.a.	31.0	66.5	59.4	41.1	33.0	2 794
March	n.a.	n.a.	n.a.	n.a.	37.5	72.6	71.8	44.9	39.8	3 406
March qtr	49	1 677	5 163	721	102.4	68.2	202.1	43.5	109.5	9 403
SERVICED APARTMENTS										
2000										
March qtr	25	892	3 523	439	58.8	72.4	130.8	40.8	56.6	6 233
2001										
January	n.a.	n.a.	n.a.	n.a.	20.6	75.6	52.2	52.2	21.6	2 484
February	n.a.	n.a.	n.a.	n.a.	17.0	68.9	36.8	40.8	16.9	1 975
March	n.a.	n.a.	n.a.	n.a.	20.8	76.4	45.0	45.0	20.1	2 396
March qtr	25	880	3 224	437	58.4	73.8	133.9	46.2	58.6	6 855
TOTAL ESTABLISHMENTS										
2000										
March qtr	131	5 570	17 020	4 220	334.9	66.2	619.4	40.1	332.8	30 046
2001										
January	n.a.	n.a.	n.a.	n.a.	110.4	65.2	223.6	44.0	114.7	11 111
February	n.a.	n.a.	n.a.	n.a.	101.6	66.5	182.6	39.8	101.1	9 845
March	n.a.	n.a.	n.a.	n.a.	123.0	72.7	222.0	43.7	122.3	11 955
March qtr	128	5 462	16 386	3 980	335.1	68.2	628.2	42.6	338.1	32 911

(a) Comprising establishments with 15 or more rooms or units. For explanation of terms and concepts refer to *Tourist Accommodation, Australia* (Cat. no. 8635.0).

(b) 'Takings from accommodation' after 1 July 2000 are recorded inclusive of GST. See Cat. no. 8635.0 or page 2 of this publication for more details.

Source: *Tourist Accommodation, Australia* (Cat. no. 8635.0). For more detailed information, see *Tourist Accommodation, Small Area Data, Tasmania* (Cat. no. 8635.6.40.001).

32

NATIONAL PARKS, PERSON ENTRIES(a)

<i>Tasmanian National Park attendance</i>							
	<i>Cradle Mountain(b) (Lake Dove)</i>	<i>Lake St Clair(b) (Cynthia Bay)</i>	<i>Freycinet(b)</i>	<i>Mt Field(b)</i>	<i>Narawntapu(c) (Bakers Beach)</i>	<i>Mole Creek Karst(d) (Marakoopa Cave)</i>	<i>Maria Island(e) (Darlington)</i>
	<i>no.</i>	<i>no.</i>	<i>no.</i>	<i>no.</i>	<i>no.</i>	<i>no.</i>	<i>no.</i>
2000–01	186 000	111 800	273 000	138 700	r 34 300	26 788	13 020
2000							
July	6 600	2 800	10 000	5 200	1 000	1 023	62
August	7 600	2 600	10 600	6 300	1 200	1 140	313
September	10 600	6 200	16 500	9 800	2 100	2 354	929
October	11 400	6 900	15 100	9 200	2 600	1 798	748
November	15 000	9 400	21 700	11 000	3 600	2 454	1 224
December	21 200	11 700	32 500	15 200	5 100	3 910	1 394
2001							
January	32 000	20 400	53 900	23 200	6 000	4 203	2 492
February	20 300	15 000	36 100	15 600	3 800	2 277	1 650
March	22 900	15 700	30 800	15 000	3 500	2 397	1 719
April	22 400	11 500	24 700	15 400	2 600	2 635	1 442
May	8 900	6 100	11 500	7 200	r 1 500	1 102	535
June	7 200	3 300	9 300	5 600	1 400	1 394	481
July	8 700	3 000	8 500	5 500	1 600	n.y.a.	100

(a) A 'person entry' occurs whenever a visitor enters a National Park. Freycinet data, in particular, reflects repeat entries. Measurement occurs at the designated sites in brackets.

(b) Estimated through a combination of traffic and booth counts.

(c) Estimated through traffic counts.

(d) Number of people taken on a guided tour.

(e) The sum of ferry arrivals and estimated plane passengers.

Source: *Tasmanian Parks and Wildlife Service, Department of Primary Industries, Water and Environment.*

33

TRACKS IN NATIONAL PARKS, WALKER REGISTRATIONS(a)

	<i>Overland(b)</i>	<i>South Coast(c)</i>	<i>Freycinet(d)</i>	<i>Port Davey(c)</i>	<i>Frenchmans Cap</i>
	<i>no.</i>	<i>no.</i>	<i>no.</i>	<i>no.</i>	<i>no.</i>
2000–01	p 7540	p 888	3 002	p 208	753
2000					
July	p 33	3	89	2	15
August	p 55	—	35	—	5
September	p 117	12	163	4	27
October	p 146	p 14	113	p 1	5
November	p 584	p 60	216	p 11	41
December	p 1 193	p 172	489	p 39	106
2001					
January	p 1 637	p 285	695	p 53	207
February	p 1 385	p 211	414	p 52	167
March	p 1 089	p 85	291	p 30	98
April	p 993	p 40	307	p 10	42
May	p 155	p 4	94	p 5	33
June	p 153	p 2	96	p 1	7
July	p 127	p 2	81	p 2	7

(a) Numbers include only walkers who registered and represented their intention.

(b) Sum of registrations at Cradle Mt and Lake St Clair. Registrations from July 2000 affected by trackhead relocation at Cradle Mt.

(c) Sum of registrations to walk the length of the track in any direction, irrespective of starting point.

(d) All overnight walkers registered in the park.

Source: *Tasmanian Parks and Wildlife Service, Department of Primary Industries, Water and Environment.*

	<i>Passenger vehicles</i>	<i>Other vehicles(b)</i>	<i>Total (excl. motor cycles)</i>	<i>Vehicles registered by vehicle rental businesses(c)</i>	<i>Motor cycles</i>
	<i>no.</i>	<i>no.</i>	<i>no.</i>	<i>no.</i>	<i>no.</i>
1998–99	12 359	2 786	15 145	1 771	568
1999–2000	11 373	3 183	14 556	2 093	563
2000–01	12 604	2 769	15 373	2 040	720
2000					
June	665	394	1 059	1	27
July	1 001	204	1 205	81	47
August	1 228	244	1 472	209	70
September	1 313	232	1 545	454	49
October	1 028	213	1 241	213	47
November	1 191	245	1 436	173	82
December	1 827	208	2 035	884	77
2001					
January	827	214	1 041	9	96
February	793	203	996	6	40
March	965	230	1 195	7	68
April	732	193	925	2	40
May	886	288	1 174	2	56
June	813	295	1 108	—	48

(a) Includes State and Commonwealth Government owned motor vehicles and other than those belonging to the defence services. Excludes tractors, plant and equipment, caravans and trailers.

(b) Comprises utilities, panel vans, rigid and articulated trucks and other truck type vehicles (i.e. motor vehicles designed for purposes other than freight carrying, e.g. campervans, tow trucks, ambulances and hearses) and buses.

(c) These figures are included in previous columns.

Source: ABS data available on request from datacube: 9303.0.55.001 New Motor Vehicle Registrations (NMVR), Australia, Main Data.

	Trend							Change from corresponding month of previous year
	Total(d)							
	Original	Food retailing	Clothing and soft good retailing	Household good retailing	Recreational good retailing	Hospitality and services		
	\$m	\$m	\$m	\$m	\$m	\$m	\$m	%
1998-99	3 170.1	1 352.8	185.2	337.6	201.1	434.5	3 176.8	..
1999-2000	r 3 278.5	1 397.9	163.2	366.4	211.0	475.1	3 254.4	..
2000-01	3 405.8	1 481.8	173.9	411.1	211.8	485.4	3 419.9	..
2000								
June	264.8	114.2	13.1	32.4	17.3	38.1	268.9	-1.2
July	247.7	115.8	13.2	33.0	17.0	39.7	273.0	0.1
August	261.6	117.1	13.6	32.8	17.0	38.9	274.1	0.3
September	264.9	118.7	13.9	32.6	17.1	38.6	275.7	0.8
October	274.7	120.4	14.0	32.7	17.2	38.7	277.8	1.6
November	294.1	122.1	14.0	33.2	17.5	39.0	280.7	2.9
December	372.5	123.6	14.1	34.0	17.8	39.5	284.0	4.5
2001								
January	281.8	124.9	14.2	34.8	18.0	40.1	287.4	6.1
February	265.5	126.1	14.5	35.5	18.2	40.7	290.2	7.4
March	299.1	127.1	14.9	35.8	18.2	41.4	292.4	8.5
April	r 281.3	128.0	15.4	35.8	18.1	42.2	294.0	9.3
May	r 286.0	128.7	15.8	35.6	18.0	42.9	295.0	9.8
June	276.5	129.2	16.2	35.4	17.8	43.5	295.6	9.9

(a) Excludes motor vehicles, parts, petrol, etc.

(b) ABS retail seasonally adjusted and trend estimates for earlier periods are revised each month. See Cat. no. 8501.0 for more details.

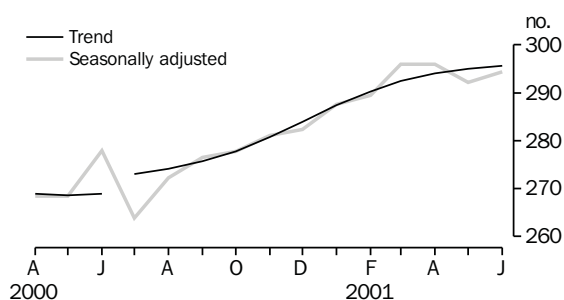
(c) Data from July 2000 reference month onwards are recorded inclusive of GST. See Cat. no. 8501.0 and page 2 of this publication for more details.

A break in the trend series occurred between June and July 2000 because of the impact of The New Tax System on Retail turnover.

(d) Includes Department stores and Other retailing.

Source: Retail Trade, Australia (Cat. no. 8501.0).

RETAIL TURNOVER, TASMANIA



36

VALUE OF OVERSEAS TRADE(a), TASMANIA AND AUSTRALIA

	Tasmania				Australia			
	Imports	Imports change over preceding period	Exports	Exports change over preceding period	Imports	Imports change over preceding period	Exports(b)	Exports change over preceding period
		%		%		%		%
	\$m		\$m		\$m		\$m	
1998-99	407	6	2 019	-5	97 611	8	85 991	-2
1999-2000	440	8	2 215	10	110 078	13	97 286	13
2000-01	524	19	2 434	10	118 264	7	119 602	23
2000								
June	33	-43	175	-39	10 436	1	9 193	—
July	47	44	165	-6	9 755	-7	9 367	2
August	56	19	182	10	10 716	10	9 374	—
September	34	-40	167	-8	9 852	-8	9 779	4
October	37	12	198	18	11 154	13	10 551	8
November	59	58	283	43	11 006	-1	10 431	-1
December	55	-7	221	-22	9 250	-16	10 294	-1
2001								
January	45	-18	193	-13	9 230	—	r 8 329	-19
February	30	-33	174	-10	8 322	-10	r 9 231	11
March	48	60	213	23	r 9 933	19	r 10 575	15
April	28	-42	212	—	r 9 575	-4	r 10 311	-3
May	51	82	r 223	5	r 9 985	4	r 10 688	4
June	34	-33	203	-9	9 485	-5	10 672	—

(a) It is difficult to get a complete picture of Tasmania's trade performance as imports recorded by the ABS include only goods imported directly into the State from overseas, and reported by the Australian Customs Service. Many of Tasmania's goods imported for direct consumption, or input into further processing industries, arrive via interstate ports, and are not included in this table.

(b) Includes re-exports.

37

MERCHANDISE EXPORTS, BY COUNTRY — ORIGINAL

	European Community				East Asia				Total all countries
	United States of America	United Kingdom	Total European Community	Japan	Korea	Taiwan	Hong Kong	ASEAN(a)	
	\$'000	\$'000	\$'000	\$'000	\$'000	\$'000	\$'000	\$'000	
1998-99	235 787	28 691	278 037	466 626	101 177	150 071	152 533	353 441	2 019 182
1999-2000	202 831	19 228	309 082	489 037	133 553	207 233	201 348	383 690	2 214 523
2000-01	229 612	37 155	153 986	572 393	183 879	213 979	252 739	389 638	2 433 785
2000									
June	19 426	2 096	7 506	48 785	9 826	18 445	17 196	36 132	175 200
July	15 659	4 656	9 294	37 751	9 225	12 890	21 192	27 769	165 211
August	20 931	1 692	5 910	48 365	17 824	14 886	20 108	37 054	181 850
September	12 901	4 164	10 151	30 647	11 893	22 416	25 542	37 853	167 042
October	24 633	1 498	19 191	45 135	16 749	15 747	9 390	33 927	197 837
November	13 016	7 233	12 979	44 258	17 667	24 775	21 497	36 863	283 376
December	10 652	4 172	r 12 741	r 70 650	18 140	r 14 879	26 852	r 31 899	r 220 859
2001									
January	19 727	1 218	9 265	r 45 884	r 10 536	r 21 125	28 183	27 182	r 193 234
February	19 243	2 303	r 17 188	42 876	14 478	10 273	16 153	r 29 667	r 173 560
March	22 422	1 327	r 19 267	36 113	12 575	r 20 579	r 25 979	r 35 833	r 212 615
April	19 556	r 2 988	r 19 192	r 48 675	22 315	r 19 680	r 19 804	r 36 482	r 212 410
May	r 28 903	r 3 660	r 8 191	r 44 955	r 14 566	r 25 388	r 25 858	r 35 483	r 222 638
June	21 970	2 245	10 617	77 086	17 912	11 342	14 181	19 627	203 152

(a) ASEAN member countries are: Brunei, Indonesia, Laos, Malaysia, Myanmar, Philippines, Singapore, Thailand and Vietnam.

	<i>Meat and meat preparations</i>	<i>Dairy products</i>	<i>Fish, crustaceans and molluscs</i>	<i>Vegetables and fruit</i>	<i>Wood and woodchips(a)</i>	<i>Textile fibres and wastes</i>	<i>Metallic ores and metal scrap</i>
	\$'000	\$'000	\$'000	\$'000	\$'000	\$'000	\$'000
1998–99	65 026	102 709	136 268	54 907	296 164	24 999	278 001
1999–2000	88 298	64 573	145 484	44 689	303 340	22 358	242 584
2000–01	88 126	101 012	176 699	49 309	31 764	21 248	243 452
2000							
June	7 970	6 579	6 236	4 424	1 344	1 094	21 483
July	6 308	7 649	15 964	4 218	3 836	1 363	20 738
August	5 830	5 267	15 700	3 506	3 521	534	12 968
September	4 155	6 875	16 804	1 434	2 665	2 927	10 291
October	5 197	10 689	11 322	969	2 567	2 834	25 250
November	7 524	10 720	16 754	369	481	2 092	14 008
December	8 148	10 536	21 261	r 621	r 4 912	3 258	33 759
2001							
January	9 339	8 678	r 17 464	r 924	r 2 209	1 423	12 862
February	9 101	r 10 076	12 292	2 850	r 196	722	17 019
March	8 060	8 428	r 17 173	r 7 384	r 4 902	5 764	19 848
April	7 573	6 069	r 9 729	r 15 029	r 2 130	70	18 218
May	r 9 272	r 8 689	r 11 837	r 8 636	r 2 488	131	r 25 575
June	7 620	7 338	10 401	3 371	1 858	131	32 916

	<i>Medical and pharmaceutical products</i>	<i>Paper and paperboard</i>	<i>Iron and steel</i>	<i>Non-ferrous metals</i>	<i>Road vehicles and transport equipment</i>	<i>Other and combined confidential items</i>	<i>Total all commodity groups</i>
	\$'000	\$'000	\$'000	\$'000	\$'000	\$'000	\$'000
1998–99	52 330	4 130	95 265	544 311	173 015	192 057	2 019 182
1999–2000	67 353	9 932	10 216	681 903	213 836	319 958	2 214 523
2000–2001	110 346	3 423	4 209	793 330	107 372	703 495	2 433 785
2000							
June	5 613	596	782	64 109	521	54 450	175 200
July	7 800	377	458	47 490	251	48 761	165 211
August	10 757	594	234	61 675	136	61 127	181 850
September	7 097	364	386	62 659	397	50 989	167 042
October	10 686	228	161	61 649	1 017	65 269	197 838
November	12 732	310	366	74 040	89 077	54 904	283 376
December	3 576	58	530	74 769	4 585	r 54 847	r 220 859
2001							
January	8 551	145	275	71 708	1 514	r 58 143	r 193 234
February	9 434	73	429	65 707	2 046	43 615	r 173 560
March	15 862	634	259	66 722	2 256	r 55 325	r 212 615
April	5 202	180	499	72 898	3 146	r 71 668	r 212 410
May	8 078	89	r 338	r 78 422	699	r 68 387	r 222 639
June	10 571	372	273	55 593	2 248	70 461	203 152

(a) Hardwood woodchips exports are confidential from June 2000.

Source: *International Trade*.

	NSW	Vic.	Qld	SA	WA	Tas.	Aust.(a)
Population							
Estimated resident population, December 2000 ('000) p	6 502.6	4 797.4	3 597.2	1 500.5	1 897.4	470.1	19 277.1
Proportion of Australian population, December 2000 (%) p	33.7	24.9	18.7	7.8	9.8	2.4	100.0
Population growth rate, 12 months to December 2000 (%) p	1.1	1.3	1.7	0.3	1.4	-0.1	1.2
Labour force							
Employment growth, 12 months to July 2001 (trend series) (%)							
Males	-0.3	1.9	-1.2	-3.4	0.3	-1.2	-0.1
Females	0.7	0.4	2.2	2.1	0.9	-1.2	1.0
Persons	0.1	1.2	0.3	-1.0	0.6	-1.2	0.4
Unemployment rate (trend series), July 2001 (%)	6.0	6.4	8.6	7.7	7.7	8.7	6.9
Unemployment growth, 12 months to July 2001 (trend series) (%)	13.0	6.9	19.4	0.5	32.7	-3.1	13.9
Participation rate (trend series), July 2001 (%)	62.7	63.7	65.2	60.3	67.0	58.1	63.8
Job vacancy rate, May 2001 (%)	1.2	1.1	1.0	1.0	0.9	0.9	1.1
Working days lost through industrial disputes, 12 months to May 2001 (days per '000 employees)	43	57	58	8	31	3	44
Wages and prices							
Average weekly total earnings, full-time adult employees (trend series) May 2001 (\$)							
Males	978.60	878.20	858.30	878.40	954.80	816.30	920.10
Females	776.30	750.30	711.00	715.50	711.00	704.00	750.30
Persons	903.90	832.90	804.30	821.20	869.70	777.00	857.70
Average weekly total earnings, full-time adult employees, growth (trend), 12 months to May '01 (%)	4.2	3.2	4.8	5.9	4.0	1.6	4.1
Consumer price index, all groups, annual growth to June qtr 2000 (%) (b)	6.3	5.9	6.0	5.9	6.0	5.5	6.0
Building							
% change in the number of total dwelling units approved (original),							
— in the 12 months ended June 2001, over the same period previous year	-35.3	-29.1	-32.5	-32.5	-33.8	-36.8	-32.4
— June 2000 to June 2001	-8.3	1.6	15.1	23.1	3.7	39.6	4.2

For footnotes see end of table.

...continued

	NSW	Vic.	Qld	SA	WA	Tas.	Aust.(a)
Private investment and retail trade							
% change in private new capital expenditure, 12 months ended March 2001, over the same period previous year (original)	2.2	-7.4	-11.9	23.2	-6.2	26.5	-2.7
% change in trend estimates turnover of retail establishments, June 2001 (change from corresponding month of the previous year)	9.9	11.8	11.3	10.8	3.1	9.9	10.1
Transport							
% change in number of new motor vehicles (excluding motorcycles) registered in the 12 months ended June 2001, over the same period previous year	4.8	12.0	21.4	11.3	10.5	5.6	10.5
Agriculture							
% change in the number of livestock slaughtered 12 months ended June 2001 over the same period previous year (original)							
Cattle and calves	-0.7	-4.6	6.3	-1.2	4.1	-16.4	0.8
Sheep and lambs	6.5	10.0	7.2	13.1	2.6	-25.3	6.8
Tourism — room occupancy rates							
Hotels, motels & guest houses, & serviced apartments with facilities, March quarter 2001 (%)	57.9	62.1	55.9	58.4	54.4	68.2	57.7
Australian National and State Accounts							
% change in Domestic (State) Final Demand(c), Chain Volume measures (trend series)							
Dec qtr 2000 to Mar qtr 2000	-1.2	0.4	0.7	1.4	1.1	0.4	0.2
Mar qtr 1999 to Mar qtr 2000	-1.5	1.2	0.3	4.1	-0.7	1.0	—

(a) Australian totals include the ACT and NT, with the exception of Agriculture, which excludes both.

(b) CPI applies to State capitals.

(c) Total of four types of expenditure: Private investment, Private consumption, Government investment, Government consumption.

		<i>Greater Hobart and Southern Statistical Divisions</i>	<i>Northern Statistical Division</i>	<i>Mersey-Lyell Statistical Division</i>	<i>Tasmania</i>
Area(a)	<i>Unit</i> km ²	25 616	19 980	22 523	68 121
Population					
Estimated resident population, 30 June 1996	no.	230 187	134 047	110 209	474 443
Estimated resident population, 30 June 2000	no.	229 060	133 080	108 236	470 376
Births 1999(b)	no.	2 937	1 717	1 345	6 032
Deaths 1999(b)	no.	1 823	1 111	834	3 783
Labour force (original), July 2001					
Total employed	no.	93 900	60 600	42 200	196 600
Total unemployed	no.	9 300	5 000	4 700	19 000
Unemployment rate	%	9.0	7.7	10.0	8.8
Participation rate	%	56.8	60.9	56.4	57.9
Schools, 2000(c)					
Government	no.	99	58	58	215
Non-government	no.	34	17	16	67
Full-time equivalent School students, 2000(c)					
Government					
Males	no.	15 415.8	9395.0	7 805.3	32 616.1
Females	no.	14 865.6	9 492.4	7 597.5	31 955.5
Total	no.	30 281.4	18 887.4	15 402.8	64 571.6
Non-government					
Males	no.	5 825.2	2 479.1	2 022.2	10 326.5
Females	no.	6 132.9	2 423.5	1 919.2	10 475.6
Total	no.	11 958.1	4 902.6	3 941.4	20 802.1
Educational qualification, 1996 Census(d)					
Bachelor degree or higher(e)	no.	17 058	7 152	3 908	28 184
Undergraduate diploma	no.	5 893	3 268	2 181	11 374
Associate diploma	no.	3 773	1 902	1 466	7 184
Skilled vocational	no.	16 255	10 040	8 841	35 238
Basic vocational	no.	4 548	2 632	2 305	9 515
Agriculture					
Establishments with agricultural activity, 1999–2000 season	no.	1 123	1 597	1 710	4 430
Total area of establishments	ha.	648 148	835 793	309 599	1 793 540
Crops, production, 1999–2000 season					
Potatoes	tonnes	4 197	103 197	159 778	267 172
Onions	tonnes	—	18 350	44 365	62 716
Apples	tonnes	44 900	4 592	8 044	57 537
Barley	tonnes	5 443	15 362	1 376	22 181
Livestock, 1999–2000 season					
Meat cattle	no.	49 738	162 071	198 800	410 610
Milk cattle	no.	5 053	80 396	120 552	206 000
Sheep and lambs	no.	1 351 885	1 807 545	181 248	3 340 678
Pigs	no.	1 761	11 360	4 427	17 548
Gross value of agricultural production, 1998–99	\$m	147	249	305	700

For footnotes see end of table.

...continued

	<i>Unit</i>	<i>Greater Hobart and Southern Statistical Divisions</i>	<i>Northern Statistical Division</i>	<i>Mersey-Lyell Statistical Division</i>	<i>Tasmania</i>
Business locations, September 1998					
Locations with manufacturing activity					
Less than 20 employees	no.	424	327	257	1 008
20 or more employees	no.	83	67	48	198
Total	no.	507	394	305	1 206
Locations with retail activity					
Less than 20 employees	no.	2 046	1 346	1 133	4 525
20 or more employees	no.	82	43	35	160
Total	no.	2 128	1 389	1 168	4 685
Building, 2000–2001					
Total dwelling units approved	no.	632	346	218	1 196
Value of total residential building approved	\$'000	91 130	47 635	31 978	170 742
Value of total building approved	\$'000	173 164	93 717	56 423	323 304
Dwellings, Census 1996					
Total dwellings	no.	98 815	57 467	45 529	201 820
Occupied private dwellings	no.	85 255	49 759	40 183	175 197
Fully owned	no.	34 338	21 563	18 359	74 260

(a) Source: Department of Primary Industry, Water and Environment.

(b) Births and deaths are based on usual residence year of registration. Total Tasmania includes usual residence other than Tasmanian Statistical Divisions.

(c) Source: DETYA and Tasmanian Department of Education.

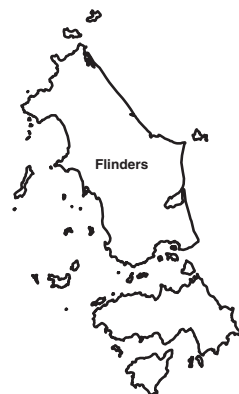
(d) Total includes migratory statistical division.

(e) Includes higher degree, postgraduate diploma and bachelor degree.



Statistical Divisions

Statistical Division NORTHERN
 Local Government Area Dorset



Based on ASGC 1996
 Prepared by: Demography Section, ABS Hobart
 © Commonwealth of Australia, 1998

FOR MORE INFORMATION...

- INTERNET** www.abs.gov.au the ABS web site is the best place to start for access to summary data from our latest publications, information about the ABS, advice about upcoming releases, our catalogue, and Australia Now—a statistical profile.
- LIBRARY** A range of ABS publications is available from public and tertiary libraries Australia-wide. Contact your nearest library to determine whether it has the ABS statistics you require, or visit our web site for a list of libraries.
- CPI INFOLINE** For current and historical Consumer Price Index data, call 1902 981 074 (call cost 77c per minute).
- DIAL-A-STATISTIC** For the latest figures for National Accounts, Balance of Payments, Labour Force, Average Weekly Earnings, Estimated Resident Population and the Consumer Price Index call 1900 986 400 (call cost 77c per minute).

INFORMATION SERVICE

Data which have been published and can be provided within five minutes are free of charge. Our information consultants can also help you to access the full range of ABS information—ABS user-pays services can be tailored to your needs, time frame and budget. Publications may be purchased. Specialists are on hand to help you with analytical or methodological advice.

- PHONE** **1300 135 070**
- EMAIL** **client.services@abs.gov.au**
- FAX** 1300 135 211
- POST** Client Services, ABS, GPO Box 796, Sydney 1041

WHY NOT SUBSCRIBE?

ABS subscription services provide regular, convenient and prompt deliveries of ABS publications and products as they are released. Email delivery of monthly and quarterly publications is available.

- PHONE** 1300 366 323
- EMAIL** subscriptions@abs.gov.au
- FAX** 03 9615 7848
- POST** Subscription Services, ABS, GPO Box 2796Y, Melbourne 3001



2130360009011
ISSN 1034-1803

RRP \$20.00